

21 33

Fabbrica motori dal 1978

Blue Bird
Industries 



English

21

BB

BB

Fabbrica motori dal 1978

Blue Bird
Industries 

Over 40 years of experience...

Established in December 1978 as a manufacturer of brushcutters and trimmers with internal combustion engines of its own design, the company manufactures the first two engines with displacement 31 and 38 cm³ and debuts with its Blue Bird branded brushcutters.

The introduction of the new machines on the market has a positive response, which pushes the company to invest in new molds and equipment, expanding the range of its machines. This is how the first earth augers, motor pumps, hedge trimmers and other products such as hoists and motors for mini-motorbikes were born.

The commitment and perseverance of the management together with the competence of its technical staff lead in a few years Blue Bird to be one of the leading European companies for the production and sale of gardening and small-scale agricultural machinery.

During the 1980s and 1990s, the company remained dynamic and flexible and established relationships with other companies in the market. It began marketing new products and sold its machines to major Italian and foreign companies.

For several years, the range of Blue Bird products has been wide and complete and includes petrol engines, brush cutters, petrol and electric trimmers, hedge trimmers, motor pumps, earth



COMPANY WITH
QUALITY SYSTEM
CERTIFIED BY DNV GL
= ISO 9001 =



augers, olive shakers, chainsaws, garden shredders, lawn mowers, garden tractors, blowers, carriers, as well as a whole series of useful and safe accessories for the aforementioned machines. The excellent quality of the products offered, the effective after-sales service and a solid and flexible sales network have allowed the Blue Bird brand to spread throughout Europe, as well as in some Asian and South American countries.

To maintain the high standard of its products and remain a reference company in the European market, Blue Bird has continued to invest in its human and technological resources. Training, development and staff competence have thus led the company to obtain ISO 9001/2008 certification, further demonstrating the reliability of the company and the effectiveness of its organization. The achievement of this goal, however, is not seen as an arrival, but as the beginning of a further phase of improvement of both company and product quality. With the advent of new European regulations that limit the emission of unburnt gases into the atmosphere, Blue Bird has designed and developed a new range of five low environmental impact engines.



Index

6 Battery powered tools



12 Brushcutters



20 Scissors / Pruners / Tying machines



26 Olive harvesters / Shakers



28 Chainsaws



34 Blowers / Sprayers / Shredder



36 Hedge trimmers



38 Earth augers



44 Winches / Motor drills



48 Robot mowers



52 **Lawn mowers / Scarifiers**



60 **Lawn tractors**



64 **Large surface mowers**



65 **Flail mowers**



66 **Wheeled brushcutters**



72 **Motor tillers**



74 **Crawler carriers**



78 **Log splitters**



80 **Motor pumps**



82 **Accessories**

Battery powered tools



Fabbrica motori dal 1978

Blue Bird
Industries 

Always attentive and oriented towards continuous research, Blue Bird Industries has introduced a range of electric tools powered by 40V / 2.5 A/h - 4 A/h lithium battery.

This battery size guarantees suitable durations for domestic use and is the first step in the transition from traditional electric tools to battery powered ones. Furthermore, the interchangeability of the battery (included in each machine) allows having more batteries available to the user who purchases more than one model of the range.



Battery powered tools

Hedge trimmer



HTB 40

COD. 883420

Blades length	540 mm
Max. cutting diameter	18 mm
RPM	1200
Working time (no-load)	> 60 mins
Blades	Steel
Handle	Adjustable at 180° - double grip
Blade protection	Included
Weight (with battery included)	3.8 kg
Lithium battery	40 V - 2.5 Ah (included)
Battery charge indicator	Included
Battery charger	Included
Charging time	3 to 5 hours (standard charger)
Retail price	€ 213,93

Blower



BLB 40

COD. 883430

Speed	Adjustable + TURBO mode
Working time	55 min (min speed) 16 min (max speed) 8 min (TURBO mode)
Air emission speed	20 - 42 m/s
Air emission volume	7.1 - 11.2 - 13.6 m ³ /min
Handle	Ergonomic - double grip
Engine	Brushless
Weight (with battery included)	3.4 kg
Lithium battery	40 V - 2.5 Ah (included)
Battery charge indicator	Included
Battery charger	Included
Charging time	3 to 5 hours (standard charger)
Retail price	€ 224,59

Pole hedge trimmer



PHB 40

COD. 883150

Blades length	430 mm
Max. cutting diameter	18 mm
Telescopic shaft	240 to 315 cm
Working time (no-load)	55 mins
Adjustable head	6 positions - 90°
Engine power	560 W
Weight (with battery included)	5 kg
Lithium battery	40 V - 2.5 Ah (included)
Battery charge indicator	Included
Battery charger	Included
Charging time	3 to 5 hours (standard charger)
Retail price	€ 231,96

Pole pruning saw



PSB 40

COD. 883140

Cutting size	10" – 250 mm
Chain speed	4.5 m/s
Telescopic shaft	220 to 295 cm
Bar - chain	OREGON
Chain lubrication	Automatic
Chain tensioning	Automatic
Cuts no. with 1 charge	45 to 75
Adjustable head	4 positions - 90°
Engine power	360 W
Weight (with battery included)	5 kg
Lithium battery	40 V – 2.5 Ah (included)
Battery charge indicator	Included
Battery charger	Included
Charging time	3 to 5 hours (standard charger)
Retail price	€ 248,36

Trimmer



TRB 40

COD. 883570

Cutting size	300 mm
RPM	7500 (no-load)
Working time (no-load)	> 35 min
Nylon line Ø	1.6 mm
Cutting head	Tap & Go
Cutting head capacity	6 mt
Shaft	Telescopic
Cutting head	Rotating
Edge-cutting function	Included
Flower protection	Included
Weight (with battery included)	3.6 kg
Lithium battery	40 V – 2.5 Ah (included)
Battery charge indicator	Included
Battery charger	Included
Charging time	3 to 5 hours (standard charger)
Retail price	€ 202,45

Brushcutter



BCB 40

COD. 883550

Cutting size	255 mm
RPM	6000 (no-load)
Working time	30 – 96 min
Nylon line Ø	2 mm
Cutting head	Tap & Go
Cutting head capacity	6 mt
Shaft	Foldable
Cutting head	Rotating
Engine	Brushless
Engine power	450 W
Weight (with battery included)	3.9 kg
Lithium battery	40 V – 2.5 Ah (included)
Battery charge indicator	Included
Battery charger	Included
Charging time	3 to 5 hours (standard charger)
Tempo di ricarica	da 3 a 5 ore
Retail price	€ 298,36

Battery powered tools

Lawn mowers



LMB 40-37

COD. 883560

Cutting width	370 mm
Cutting height adjustment	central - 5 positions
Cutting height	30 - 80 mm
Deck	composite
Collecting bag	40 lt
Wheels	front 160 mm - back 180 mm
RPM	3800 (no-load)
Working time (no-load)	42 min
Cutting surface	170 - 340 sqm
Engine	350 W brushless
Traction	No
Weight	17 kg
Lithium battery	40 V - 2.5 Ah (1 included)
Battery charge indicator	Included
Battery charger	Included
Charging time	3 to 5 hours (standard charger)
Retail price	€ 332,78



LMB 40-43

COD. 883390

Cutting width	430 mm
Cutting height adjustment	central - 6 positions
Cutting height	25 - 75 mm
Deck	Steel
Collecting bag	50 lt
Wheels	front 180 mm - back 250 mm
RPM (variable)	3100 - 2800 (no-load)
Working time (no-load)	38 - 45 min
Cutting surface	400 - 800 sqm
Engine	650 W brushless
Traction	No
Weight	20 kg
Lithium battery	40 V - 2.5 Ah (1 included)
Battery charge indicator	Included
Battery charger	Included
Charging time	3 to 5 hours (standard charger)
2 in 1 discharge	collecting- mulching
Retail price	€ 413,93





LMB 40-46 S

COD. 883400

Cutting width	460 mm
Cutting height adjustment	central -6 positions
Cutting height	25 - 75 mm
Deck	Steel
Collecting bag	50 lt
Wheels	front 180 mm - back 250 mm
RPM (variable)	3100 - 2800 (no-load)
Working time (no-load)	33 - 40 min
Cutting surface	400 - 800 sqm
Engine	850 W brushless
Traction	Yes
Weight	25 kg
Lithium battery	40 V - 2.5 Ah (2 included)
Battery charge indicator	Included
Battery charger	Included
Charging time	3 to 5 hours (standard charger)
3 in 1 discharge	Side - collecting- mulching
Retail price	€ 648,36



LMB 40-51 S

COD. 883410

Cutting width	510 mm
Cutting height adjustment	central -6 positions
Cutting height	25 - 75 mm
Deck	Steel
Collecting bag	60 lt
Wheels	front 180 mm - back 250 mm
RPM (variable)	3100 - 2800 (no-load)
Working time (no-load)	42 min
Cutting surface	500 - 1000 sqm
Engine	1250 W brushless
Traction	Yes
Weight	26.5 kg
Lithium battery	40 V - 4 Ah (2 included)
Battery charge indicator	Included
Battery charger	Included
Charging time	3 to 5 hours (standard charger)
3 in 1 discharge	Side - collecting- mulching
Retail price	€ 759,01



LITHIUM BATTERY

40V - 2.5 Ah	COD. 451800	€ 102,45
40V - 4 Ah	COD. 451810	€ 154,10



BATTERY CHARGER

Charging time 3 to 5 hours	COD. 451820	€ 20,08
-------------------------------	--------------------	----------------



QUICK BATTERY CHARGER

Charging time 1 hour	COD. 451620	€ 58,20
-------------------------	--------------------	----------------



Brushcutters

Fabbrica motori dal 1978

Blue Bird
Industries 

Always attentive and oriented towards continuous research, Blue Bird Industries studied a range of brushcutters that can satisfy every user and adapt to the most varied needs and working conditions.

The entire line was developed with the help of those who use these machines in the woods, parks and gardens; for this reason, particular attention has been paid to safety, ergonomics and quality, reducing vibrations and noise.

Innovative design

Easy and safe refueling thanks to the widened mouth and the cap that guarantees tightness in any working position. Silenced muffler. Gear case pinion with double bearing. New anti-vibration system. Ergonomic handlebar grip. Professional backpack designed for perfect load distribution on the back, equipped with quick coupling and tool bag. Smooth starting thanks to the use of the decompressor and double spring.



Anti-vibration system

Tap & Go cutting head

Brushcutters



BC 261 L	
COD. 886000A	
Blue Bird engine	2-stroke* - 25.4 cc
Power	0.75 kW @ 7500 RPM
Handle	Loop
Shaft diameter	24 mm
Cutting head	Tap & Go
Blade	Included
Shoulder strap	Single
Weight **	5.8 kg
Retail price	€ 222,13

* 2% mixture with synthetic oil ** without fuel, cutting tool and stone guard



BC 341 L	
COD. 886100A	
Blue Bird engine	2-stroke* - 33 cc
Power	0.9 kW @ 7000 RPM
Handle	Loop
Shaft diameter	28 mm
Cutting head	Tap & Go
Blade	Included
Shoulder strap	Single
Weight **	6.4 kg
Retail price	€ 230,33

* 2% mixture with synthetic oil ** without fuel, cutting tool and stone guard



BC 431 L

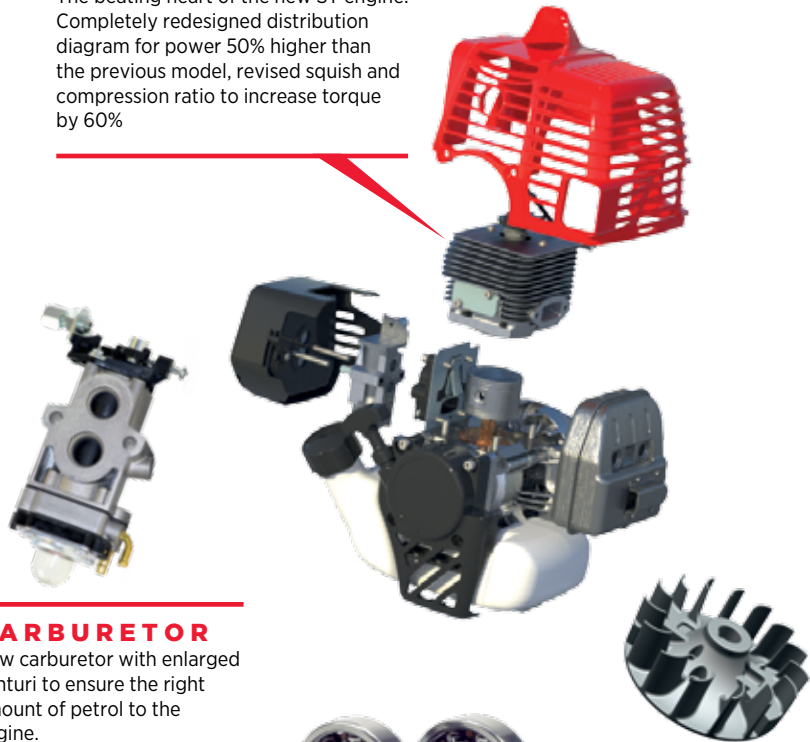
BC 431 B

	BC 431 L	BC 431 B
	COD. 886200A	COD. 886300A
Blue Bird engine	2-stroke* - 42.7 cc	2-stroke* - 42.7 cc
Power	1.25 kW @ 6500 RPM	1.25 kW @ 6500 RPM
Handle	Loop	Bike
Shaft diameter	28 mm	28 mm
Cutting head	Tap & Go	Tap & Go
Blade	Included	Included
Shoulder strap	Single	Single
Weight **	6.6 kg	7.2 kg
Retail price	€ 249,18	€ 258,20

* 2% mixture with synthetic oil ** without fuel, cutting tool and stone guard

CYLINDER

The beating heart of the new ST engine. Completely redesigned distribution diagram for power 50% higher than the previous model, revised squish and compression ratio to increase torque by 60%



CARBURETOR

New carburetor with enlarged venturi to ensure the right amount of petrol to the engine.



BEARINGS

To achieve maximum performance and long life, high smoothness main bearings are used.

FLYWHEEL

Modified flywheel to increase the air flow rate by 30%. Neodymium magnets for a more powerful spark and reduced weight.

NEW POWER GENERATIONS

Blue Bird has reviewed every aspect of its engines in detail, making numerous changes and adjustments to optimize performance.

The **ST POWER** series is the result of this careful work, a combination of attention to construction/design details and the choice of the best components.

After deep analysis, the cylinder timing diagram was completely redesigned.

Parameters such as squish and compression ratio have been optimized to ensure a more complete and effective combustion, an essential aspect for obtaining the desired power while remaining within the EURO V parameters on polluting emissions.

The components have also been carefully revised, with high smoothness bearings to limit component wear, a carburetor

with features that are perfectly suited to our needs and a flywheel with increased power.

Thanks to these modifications, many operating parameters have been substantially improved, such as:

Working temperature decreased by 25%

Power increased by 54%

Torque increased by 63%

The prototypes of the machines were tested for months by professional teams in challenging environmental conditions, to verify the resistance of the machines to stress from heavy use. The test results were extremely positive, showing significantly less wear than expected on all components.

The new ST POWER series presents itself with all the credentials to be a powerful and reliable workmate even for the most demanding users.

Brushcutters



	BC 280 L	BC 280 B
	COD. 886400A/RO	COD. 886500A/RO
Blue Bird engine	2-stroke* - 27.4 cc	2-stroke* - 27.4 cc
Power	0.94 kW @ 8000 RPM	0.94 kW @ 8000 RPM
Handle	Loop	Bike
Shaft diameter	24 mm	24 mm
Cutting head	Tap & Go	Tap & Go
Blade	Included	Included
Shoulder strap	Single	Single
Weight **	5.8 kg	6.4 kg
Retail price	€ 287,70	€ 295,90

* 2% mixture with synthetic oil ** without fuel, cutting tool and stone guard



	BC 370 L	BC 370 B
	COD. 886600A/RO	COD. 886700A/RO
Blue Bird engine	2-stroke* - 34 cc	2-stroke* - 34 cc
Power	1.14 kW @ 8000 RPM	1.14 kW @ 8000 RPM
Handle	Loop	Bike
Shaft diameter	28 mm	28 mm
Cutting head	Tap & Go	Tap & Go
Blade	Included	Included
Shoulder strap	Single	Single
Weight **	6.6 kg	7.2 kg
Retail price	€ 314,75	€ 331,97

* 2% mixture with synthetic oil ** without fuel, cutting tool and stone guard





	BC 450 STL	BC 450 STB
	COD. 885770A/RO	COD. 885800A/RO
Blue Bird engine	2-stroke*	2-stroke*
Displacement	44.3 cc	44.3 cc
Power	2 kW @ 7500 RPM	2 kW @ 7500 RPM
Handle	Loop	Bike
Shaft diameter	28 mm	28 mm
Cutting head	Tap & Go	Tap & Go
Blade	Included	Included
Shoulder strap	Single	Single
Weight **	7.7 kg	8.3 kg
Retail price	€ 425,40	€ 439,34

* 2% mixture with synthetic oil ** without fuel, cutting tool and stone guard



	BC 560 STL	BC 560 STB
	COD. 885780A/RO	COD. 885810A/RO
Blue Bird engine	2-stroke*	2-stroke*
Displacement	53.2 cc	53.2 cc
Power	2.4 kW @ 7500 RPM	2.4 kW @ 7500 RPM
Handle	Loop	Bike
Shaft diameter	28 mm	28 mm
Cutting head	Tap & Go	Tap & Go
Blade	Included	Included
Shoulder strap	Single	Single
Weight **	7.7 kg	8.3 kg
Retail price	€ 455,73	€ 468,85

* 2% mixture with synthetic oil ** without fuel, cutting tool and stone guard



	BC 610 STL	BC 610 STB
	COD. 885790A/RO	COD. 885820A/RO
Blue Bird engine	2-stroke*	2-stroke*
Displacement	57.9 cc	57.9 cc
Power	2.8 kW @ 7500 RPM	2.8 kW @ 7500 RPM
Handle	Loop	Bike
Shaft diameter	28 mm	28 mm
Cutting head	Tap & Go	Tap & Go
Blade	Included	Included
Shoulder strap	Single	Single
Weight **	7.7 kg	8.3 kg
Retail price	€ 495,08	€ 509,01

* 2% mixture with synthetic oil ** without fuel, cutting tool and stone guard

Brushcutters



	BC 450 ST PRO	BC 560 ST PRO	BC 610 ST PRO
	COD. 885830A/RO	COD. 885840A/RO	COD. 885850A/RO
Blue Bird engine	2-stroke*	2-stroke*	2-stroke*
Displacement	44.3 cc	53.2 cc	57.9 cc
Power	2 kW @ 7500 RPM	2.4 kW @ 7500 RPM	2.8 kW @ 7500 RPM
Handle	Bike	Bike	Bike
Shaft diameter	28 mm	28 mm	28 mm
Cutting head	Tap & Go	Tap & Go	Tap & Go
Blade	Included	Included	Included
Shoulder strap	Double	Double	Double
Weight **	9.4 kg	9.4 kg	9.4 kg
Retail price	€ 495,08	€ 530,32	€ 559,83

* 2% mixture with synthetic oil ** without fuel, cutting tool and stone guard



	BCB 450 STL	BCB 560 STL	BCB 610 STL
	COD. 885860/RO	COD. 885870/RO	COD. 885880/RO
Blue Bird engine	2-stroke*	2-stroke*	2-stroke*
Displacement	44.3 cc	53.2 cc	57.9 cc
Power	2 kW @ 7500 RPM	2.4 kW @ 7500 RPM	2.8 kW @ 7500 RPM
Handle	Loop	Loop	Loop
Shaft diameter	27 mm	27 mm	27 mm
Cutting head	Tap & Go	Tap & Go	Tap & Go
Blade	Included	Included	Included
Shoulder strap	Backpack	Backpack	Backpack
Weight **	12.2 kg	12.2 kg	12.2 kg
Retail price	€ 500,00	€ 530,32	€ 559,83

* 2% mixture with synthetic oil ** without fuel, cutting tool and stone guard



Multi-tool brushcutter

	COMBI BCB 560 ST
	COD. 885730/RO
Blue Bird engine	2-stroke*
Displacement	53.2 cc
Power	2.4 kW @ 7000 RPM
Shaft diameter	26 mm
Cutting head	Tap & Go
Blade	Included
Shoulder strap	Backpack
Weight **	12.2 kg
Retail price	€ 575,41

* 2% mixture with synthetic oil ** without fuel, cutting tool and stone guard

The kit includes:



Chain pruner

Brushcutter

Hedge trimmer

Extension



The kit includes:



Chain pruner

Brushcutter

Hedge trimmer

Extension

	COMBI 261	COMBI 341
	COD. 885010	COD. 885020
Blue Bird engine	2-stroke* - 25.4 cc	2-stroke* - 32.6 cc
Power	0.72 kW @ 7000 RPM	0.92 kW @ 7000 RPM
Handle	Loop	Loop
Shaft diameter	26 mm	26 mm
Weight **	4.5 kg	4.9 kg
Retail price	€ 279,50	€ 294,26

* 2% mixture with synthetic oil ** without fuel, cutting tool and stone guard



The kit includes:



Chain pruner

Brushcutter

Hedge trimmer

Extension

	COMBI 280	COMBI 370
	COD. 878320A/RO	COD. 878330A/RO
Blue Bird engine	2-stroke* - 27.4 cc	2-stroke* - 34 cc
Power	0.94 kW @ 8000 RPM	1.14 kW @ 8000 RPM
Handle	Loop	Loop
Shaft diameter	24 mm	24 mm
Weight **	5.3 kg	5.3 kg
Retail price	€ 539,34	€ 554,91

* 2% mixture with synthetic oil ** without fuel, cutting tool and stone guard

Telescopic pole pruner



Telescopic pole pruner PTT 261

	COD. 883960
Blue Bird engine	2-stroke* - 25.4 cc
Bar	3/8 LP 1.3 mm
Bar length	34.2 cm
Shaft length	4.1 mt
Weight	9.1 kg
Retail price	€ 329,50

* 2% mixture with synthetic oil



Scissors / Pruners / Tying machines

Fabbrica motori dal 1978

Blue Bird
Industries 

Blue Bird offers a wide innovative range of pruning shears suitable for all types of use. The models with integrated battery are light and extremely easy to handle, suitable for domestic use up to professional, for vineyards and orchards. The backpack battery models offer maximum performance in terms of power and cutting torque. The range is completed by battery-powered pruners, for the largest and most demanding branches, and the automatic tying machine that optimizes the operations of tying the branches.



Scissors / Pruners / Tying machines



PS 22-23	
COD. 885600	
Max. voltage	12.6 V
Max. cutting diameter	23 mm
Cutting options	2 openings + progressive cut
Cutting time	0.4 sec
Lithium battery	12.6 V- 2 Ah (2 included)
Charging time	2.5 - 4.5 h
Weight	700 gr (scissors) + 200 gr (battery)
Retail price	€ 188,52



PS 22-25	
COD. 883750	
Max. voltage	16.8 V
Max. cutting diameter	25 mm
Cutting options	2 openings + progressive cut
Cutting time	0.4 sec
Lithium battery	16.8 V- 2.5 Ah (2 included)
Charging time	1.5 - 2 h
Weight	685 gr (scissors) + 220 gr (battery)
Retail price	€ 384,42





PS 22-32	
COD. 884220	
Max. voltage	16.8 V
Max. cutting diameter	32 mm
Cutting options	2 openings + progressive cut
Cutting time	0.4 sec
Lithium battery	16.8 V- 2.5 Ah (2 included)
Charging time	3 - 4 h
Weight	750 gr (scissors) + 220 gr (battery)
Retail price	€ 459,83



	PS 22-40 2.5 Ah	PS 22-40 4 Ah
	COD. 883970	COD. 884230
Max. voltage	43.2 V	43.2 V
Max. cutting diameter	40 mm	40 mm
Cutting options	2 openings + progressive cut	2 openings + progressive cut
Cutting time	0.4 sec	0.4 sec
Lithium battery	43.2 V- 2.5 Ah (1 included)	43.2 V- 4 Ah (1 included)
Charging time	2.5 - 3.5 h	2.5 - 3.5 h
Retail price	€ 697,54	€ 779,50



Scissors / Pruners / Tying machines



	CS 22-08
	COD. 883990
Engine	Brushless
Working voltage	DC 50.4 V
Max. power	1296 W
Bar	7" - 48 drive links
Cutting size	150 mm
Chain speed	Variable
Weight	850 gr
Peso	850 gr.
Retail price	€ 409,01

	CS 22-08
	COD. 885890
Engine	Brushless
Working voltage	DC 50.4 V
Max. power	1296 W
Lithium battery	43.2 V - 4 Ah (included)
Charger	Included
Backpack	Included
Bar	7" - 48 drive links
Cutting size	150 mm
Chain speed	Variable
Weight	850 gr
Peso	850 gr.
Retail price	€ 789,34



	CS 22-04
	COD. 885610
Engine	Brushless
Max. voltage	12.6 V
Max. power	250 W
Lithium battery	12.6 V - 2.5 Ah (2 included)
Bar	4"
Cutting size	100 mm
Chain speed	Variable
Weight	800 gr (pruner) +200 gr (battery)
Retail price	€ 188,52



	EP 22-22
	COD. 7200140
Suitable to	Scissors PS 22-23 Pruner CS 22-04
Shaft length min.	1.2 mt
Shaft length max.	2 mt
Weight	1200 gr (shaft) +200 gr (battery)
Retail price	€ 134,42



Tying cable reel
PT 22-04 **BIO PVC** 95 mt
COD. 571640
€ 3,00



Tying cable reel
PT 22-04 **PVC** 95 mt
COD. 571610
€ 2,90



	PT 22-04
	COD. 883770
Max. voltage	12.6 V
Lithium battery	16.8 V - 2 Ah (2 included)
Rated power	30 W
Max. power	50 W
Diameter	25 mm
Retail price	€ 395,08

Scissors / Pruners accessories



Scissors pocket

COD. 754710
€ 14,13



**Battery suitable to
PS 22-23 / CS 22-04**

COD. 451920
12.6V - 2.5Ah
€ 27,86



**Battery suitable to
PS 22-25 / PS 22-32
PT 22-04**

COD. 451860
16.8V - 2.5Ah
€ 60,65



**Battery suitable to
PS 22-40 / CS 22-08**

COD. 451910 43.2V - 2.5Ah € 377,00	COD. 451900 43.2V - 4Ah € 435,00
--	--



**Chain for
CS 22-04**

COD. CS22-04-CHAIN
€ 8,68



**Bar for
CS 22-04**

COD. CS22-04-BAR
€ 11,47



**Vegetal chain oil
1 lt**

COD. 210280
€ 4,75



Olive harvesters / Shakers



	IONIO 3500-12V	IONIO 4000-12V
	COD. 883780	COD. 883790
Max length	2500 mm + extension 1 mt	2160/3000 mm + extension 1 mt
Engine	500 W	500 W
Motor Body	Compact size	Compact size
Weight	About 2300 gr	About 2600 gr
Combs working width	550 mm	550 mm
Beats per minute	2500 (1250+1250)	2500 (1250+1250)
Comb	Double with 8 carbon Kevlar shafts (4+4)	Double with 8 carbon Kevlar shafts (4+4)
Power cable	15 mt + fuse	15 mt + fuse
Retail price	€ 424,59	€ 479,50



	TIRRENO 3500-12V	TIRRENO 4000-12V
	COD. 883800	COD. 883810
Max length	2500 mm + extension 1 mt	2160/2960 mm + 1 mt extension
Engine	500 W	500 W
Motor Body	Compact size h 70 mm	Compact size h 70 mm
Weight	About 2300 gr	About 2600 gr
Combs working width	550 mm	550 mm
Beats per minute	2500 (1250+1250)	2500 (1250+1250)
Comb	Double with 10 carbon Kevlar shafts (5+5)	Double with 10 carbon Kevlar shafts (5+5)
Power cable	15 mt + fuse	15 mt + fuse
Retail price	€ 600,00	€ 639,34



TIRRENO 3500-36V TIRRENO 4000-36V

	COD. 883820	COD. 883830
Max length	2500 mm + extension 1 mt	2160/2960 mm + extension 1 mt
Engine	700 W	700 W
Motor Body	Compact size	Compact size
Weight	About 2300 gr	About 2600 gr
Combs working width	550 mm	550 mm
Beats per minute	2500 (1250+1250)	2500 (1250+1250)
Comb	Double with 10 carbon Kevlar shafts (5+5)	Double with 10 carbon Kevlar shafts (5+5)
Power cable	15 mt + fuse	15 mt + fuse
Retail price	€ 689,34	€ 729,50



OS 610 TV OS 610 TVT OS 610 TVTS

	COD. 881130/881140/RO	COD. 881150/RO	COD. 881160/RO
Blue Bird engine	2-stroke*	2-stroke*	2-stroke*
Displacement	57.9 cc	57.9 cc	57.9 cc
Power	2.8 kW/7000 rpm	2.8 kW/7000 rpm	2.8 kW/7000 rpm
Shaft type	Standard with vibrating head	Telescopic with vibrating head	Telescopic with vibrating head SUPER-SHAKE
Shaft length	1800 mm / 2800 mm	1700 - 2500 mm	1700 - 2500 mm
Backpack	Included	Included	Included
Handle	Anti-vibration	Anti-vibration	Anti-vibration
Weight**	13.1 kg / 13.3 kg	13.5 kg	13.7 kg
Retail price	€ 960,00 / 980,00	€ 1.260,00	€ 1.480,00

* 2% mixture with synthetic oil ** Weight without mixture



Chainsaws

Fabbrica motori dal 1978

Blue Bird
Industries 

The Blue Bird range of chainsaws includes the suitable solution for every problem: pruning, felling and delimiting. The main feature is the reliability of all chainsaws both for quality, performance, ease of use, maintenance and in particular the great maneuverability for any user.





CSE 2000	
COD. 881860	
Power	2000 W
Bar and chain length	16" (40 cm) OREGON
Chain lubrication	Automatic
Chain adjustment	Tool-less
Retail price	€ 104,91



CS 250	
COD. 880550	
Displacement	25.4 cc
Power	0.7 kW
Bar length	Standard 10" (25 cm)
Chain brake	Yes
Chain lubrication	Automatic
Handle	Anti-vibration
Weight*	2.8 kg
Retail price	€ 145,08

* Weight without mixture, bar and chain



CS 250 C	
COD. 881280	
Displacement	25.4 cc
Power	0.7 kW
Bar length	Carving 10" (25 cm)
Chain brake	Yes
Chain lubrication	Automatic
Handle	Anti-vibration
Weight*	2.8 kg
Retail price	€ 165,57

* Weight without mixture, bar and chain



CS 390	
COD. 883690	
Displacement	37.2 cc
Carburetor	Walbro
Power	1.2 kW
Bar and chain length	16" (40 cm)
Chain brake	Yes
Chain lubrication	Automatic
Handle	Anti-vibration
Weight*	4.6 kg
Retail price	€ 172,13

* Weight without mixture, bar and chain



CS 460	
COD. 883700	
Displacement	45.2 cc
Carburetor	Walbro
Power	1.5 kW
Bar and chain length	18" (45 cm)
Chain brake	Yes
Chain lubrication	Automatic
Handle	Anti-vibration
Weight*	5.4 kg
Retail price	€ 185,24

* Weight without mixture, bar and chain



CS 590	
COD. 883710	
Displacement	54 cc
Carburetor	Hualong
Power	2.2 kW
Bar and chain length	20" (50 cm)
Chain brake	Yes
Chain lubrication	Automatic
Handle	Anti-vibration
Weight*	5.4 kg
Retail price	€ 204,91

* Weight without mixture, bar and chain

Chainsaws



CSP 280 T	
COD. 884000	
Displacement	28.5 cc
Power	1 kW
Bar length	10" (25 cm) OREGON
Chain type	3/8 mini 1.3 mm
Chain lubrication	Automatic
Carburetor	Walbro
Carter	Metal
Weight	3.25 kg
Retail price	€ 221,31



CSP 280 TC	
COD. 884010	
Displacement	28.5 cc
Power	1 kW
Bar length	10" (25 cm) carving
Chain type	1/4 1.3 mm
Chain lubrication	Automatic
Carburetor	Walbro
Carter	Metal
Weight	3.25 kg
Retail price	€ 241,80



When the going gets tough...



CSP 410	
COD. 884030	
Displacement	41.4 cc
Power	1.85 kW
Bar length	16" (40 cm)
Chain type	0,325 1.3 mm
Chain lubrication	Adjustable
Carburetor	Walbro
Carter	Metal
Weight	5.2 kg
Retail price	€ 240,16



CSP 500	
COD. 884050	
Displacement	50 cc
Power	2.2 kW
Bar length	18" (45 cm)
Chain type	0,325 1.5 mm
Chain lubrication	Adjustable
Carburetor	Walbro
Carter	Metal
Weight	5.7 kg
Retail price	€ 269,67



CSP 550	
COD. 884060	
Displacement	55 cc
Power	2.4 Kw
Bar length	20" (50 cm)
Chain type	0,325 1.5 mm
Chain lubrication	Adjustable
Carburetor	Walbro
Carter	Metal
Weight	5.7 kg
Retail price	€ 290,16



Blower - Vacuum



BLV 281	
COD. 883740	
Engine	Ecological Euro 5 2 stroke*
Displacement	27.2 cc
Collecting bag	45 lt
Air emission speed	252 km/h
Weight vacuum / blower **	5.7 / 4.6 kg
Shredding ratio	10:1
Retail price	€ 186,88

* 2% synthetic oil mixture ** Weight without mixture

Blower



BBL 801	
COD. 883890	
Engine	Ecological Euro 5 2 stroke*
Displacement	75.6 cc
Collecting bag	45 lt
Air emission speed	331 km/h
Gas adjustment lever	Included
Weight **	11.6 kg
Retail price	€ 440,98

* 2% synthetic oil mixture ** Weight without mixture



Sprayer



HD 601	
COD. 880350	
Engine	Ecological Euro 5 2 stroke*
Displacement	59.2 cc
Power	2.65 kW
Tank capacity	14 lt
Max range	8 mt
Max range with double tip (included)	12 mt
Suitable for	Liquid and dust
Pump	Included
Weight **	10.3 kg
Retail price	€ 295,08

* 2% synthetic oil mixture ** Weight without mixture

Shredder



SH 2500	
COD. 880450	
Engine	Electric 2500W - 230V - 50Hz
Cutting system	Drum
Max cutting branch Ø	4 cm
Collecting basket	Included
Reverse speed	Included
Tray with wheels	Included
Blade regulation	Included
Weight	40 kg
Retail price	€ 270,49

Hedge trimmers



HTE 600	
COD. 880110	
Electric engine	600w 230V - 50 HZ
Blade length	51 cm
Blade type	Double guided cutting bars
Teeth	On both sides
Tooth pitch	24 mm
Adjustable handle	No
Weight	3.2 kg
Retail price	€ 60,90



HTE 710	
COD. 880120	
Electric engine	710W 230V - 50 HZ
Blade length	61 cm
Blade type	SK steel double guided cutting bars
Teeth	On both sides
Tooth pitch	24 mm
Adjustable handle	On 5 positions at 180°
Weight	3.7 kg
Retail price	€ 86,07



HT 261	
COD. 881610	
Engine	2 stroke* - 25.4 cc
Power	0.6 kW/7000 rpm
Blade length	61 cm
Blade type	Double guided cutting bars
Teeth	On both sides
Tooth pitch	27 mm
Blade break	Included
Adjustable handle	On 5 positions at 180°
Weight**	6.3 kg
Retail price	€ 199,18

* 2% synthetic oil mixture ** Weight without mixture



HT 261-J60

COD. 883260A

Engine	1E34FN - 2 stroke* - 25.4 cc
Power	0.7 kW/7000 rpm
Blade length	60 cm
Blade type	Double guided cutting bars
Teeth	On both sides
Tooth pitch	28 mm
Adjustable handle	On 5 positions at 180°
Weight**	5.2 kg
Retail price	€ 367,21

* 2% synthetic oil mixture ** Weight without mixture



New

HT 261-J75

COD. 885750A

Engine	1E34FN - 2 stroke* - 25.4 cc
Power	0.7 kW/7000 rpm
Blade length	75 cm
Blade type	Double guided cutting bars
Teeth	On both sides
Tooth pitch	28 mm
Adjustable handle	On 5 positions at 180°
Weight**	5.4 kg
Retail price	€ 382,78

* 2% synthetic oil mixture ** Weight without mixture



HTK 230-J60

COD. 885180A

Kawasaki engine	TJ 23 V - 2 stroke* - 23.3 cc
Power	0.63 kW/7500 rpm
Blade length	60 cm
Blade type	Double guided cutting bars
Teeth	On both sides
Tooth pitch	28 mm
Adjustable handle	On 5 positions at 180°
Weight**	5.4 kg
Retail price	€ 440,16

* 2% synthetic oil mixture ** Weight without mixture



HTK 230-J75

COD. 885130A

Kawasaki engine	TJ 23 V - 2 strokes* - 23.3 cc
Power	0.63 kW/7500 rpm
Blade length	75 cm
Blade type	Double guided cutting bars
Teeth	On both sides
Tooth pitch	28 mm
Adjustable handle	On 5 positions at 180°
Weight**	5.6 kg
Retail price	€ 460,65

* 2% synthetic oil mixture ** Weight without mixture



Earth augers

Fabbrica motori dal 1978

Blue Bird
Industries 

The Blue Bird earth augers have been designed for the preparation of land intended for piling, reforestation, planting of fruit trees in the hills or mountains even in conditions of steep slopes. They are indispensable in agricultural and forestry companies, in nurseries and on construction sites. Made of high quality materials, the NEA models are powered by high-quality Blue Bird engines, while the T-170 model is equipped with GCV170 Honda engine.

The augers are in thick steel as well as the tip and the knife; the gearbox gears are made of hardened steel. With Blue Bird earth augers you will be able to tackle jobs in complete safety and complete them in a very short time.



Decompression valve

Fuel tank

Ergonomic gas handle

Gearbox

Tempered steel auger

Tempered steel cutter

Earth augers



	NEA 450 ST	NEA 560 ST	NEA 610 ST
	COD. 888000/RO	COD. 888010/RO	COD. 888020/RO
Blue Bird engine	2-stroke* - 44.3 cc	2-stroke* - 53.2 cc	2-stroke* - 57.9 cc
Power	2 kW/7500 rpm	2.4 kW/7500 rpm	2.8 kW/7500 rpm
Max. drilling diameter	250 mm	250 mm	250 mm
Max. drilling depth	1.4 mt	1.6 mt	1.8 mt
Auger included	No	No	No
Weight**	10.7 kg	10.7 kg	10.7 kg
Retail price	€ 435,24	€ 450,00	€ 475,40

* 2% synthetic oil mixture ** Weight without mixture



	NEA 431
	COD. 883490
Blue Bird engine	2-stroke* - 42.7 cc
Power	1.25 kW/6500 rpm
Max. drilling diameter	250 mm
Max. drilling depth	1.2 mt
Auger included	No
Weight**	10.4 kg
Retail price	€ 315,57

* 2% synthetic oil mixture ** Weight without mixture



* T 170 HO must be operated by 2 or more persons
** Weight without mixture

T 170 HO*

	COD. 882650
Honda engine	GCV170 - 4-stroke - 166 cc
Power	3.6 kW (4.8 HP) @ 3600 rpm
Max. drilling diameter	400 mm
Max. drilling depth	2 mt
Auger included	No
Weight**	27 kg
Peso**	27 kg
Retail price	€ 1.150,00



Bit for TR-WAVE 77x77

	COD. 727030R
	€ 859,83

TR WAVE

	COD. 877020
Blue Bird engine	2-stroke* - 57.9 cc
Power	2.8 kW/7500 rpm
Tempered steel bit	77x77x900 mm
Max. drilling depth	0.9 mt
Auger included	Yes
Weight**	18 kg
Retail price	€ 1.450,00

* 2% synthetic oil mixture ** Weight without mixture



Earth augers accessories

The augers, tips and cutters are made of thick steel. With Blue Bird earth augers you will be able to tackle jobs in complete safety and complete them in a very short time. The Blue Bird earth augers have been designed for the preparation of land intended for piling, reforestation, planting of fruit trees in the hills or mountains even in conditions of steep slopes. They are indispensable in agricultural and forestry companies, in nurseries and on construction sites.



SPIRAL AUGERS FOR NEA

Modello	Ø mm		
80 x 800	80	COD . 720020	€ 87,70
100 x 800	100	COD . 720040	€ 95,08
120 x 800	120	COD . 720070	€ 85,25
150 x 800	150	COD . 720170	€ 86,89
180 x 800	180	COD . 720210	€ 90,16
200 x 800	200	COD . 720350	€ 95,08
250 x 800	250	COD . 727430	€ 145,08



EXTENSIONS

Without spiral for NEA

Length 400 mm	COD. 750360	€ 43,44
With quick coupling for T 170 HO		
Length 500 mm	COD. 751380	€ 108,19
Length 1000 mm	COD. 751390	€ 132,79



SPIRAL AUGERS FOR T 170 HO (one start)

Modello	Ø mm		
100 x 700	100	COD . 722000	€ 169,67
150 x 700	150	COD . 722010	€ 179,50
100 x 1000	100	COD . 722140	€ 189,34
150 x 1000	150	COD . 722150	€ 195,90



DRILLING BITS

For NEA	COD. 750750	€ 9,26
For T160H	COD. 750760	€ 11,60



DIGGING CUTTERS

Ø mm 80	COD. 600470	€ 8,68
Ø mm 100	COD. 600150	€ 9,22



SPIRAL AUGERS FOR T 170 HO (two start)

Modello	Ø mm		
200 x 700	200	COD . 722020	€ 214,75
250 x 700	250	COD . 722030	€ 219,67
300 x 700	300	COD . 722040	€ 294,26
350 x 700	350	COD . 722050	€ 337,70
400 x 700	400	COD . 722060	€ 359,83
200 x 1000	200	COD . 722160	€ 231,96
250 x 1000	250	COD . 722170	€ 254,10
300 x 1000	300	COD . 722180	€ 331,14
350 x 1000	350	COD . 722190	€ 375,40
400 x 1000	400	COD . 722200	€ 430,32



DIGGING CUTTERS

Ø mm 120	COD. 600450	€ 9,46
Ø mm 150	COD. 600170	€ 8,32
Ø mm 180	COD. 600460	€ 10,00
Ø mm 200	COD. 600180	€ 10,40
Ø mm 250	COD. 600190	€ 11,31
Ø mm 300	COD. 600200	€ 12,99
Ø mm 350	COD. 600210	€ 14,01
Ø mm 400	COD. 600220	€ 15,57



Winches / Motor drills

Fabbrica motori dal 1978

Blue Bird
Industries 

The constant attention paid to the needs of the market suggested to Blue Bird the design and construction of a range of portable winches with gasoline engines of great utility. Blue Bird's experience and Made in Italy design led to the creation of 2 extremely versatile, compact and easy to handle models.

Built with very solid materials, Blue Bird winches are the indispensable tool for forestry work, hunting, rescue, emergency towing and many other applications. Innovative technical solutions make these machines much more versatile and easy to use than the average products on the market.

The towing force is guaranteed by the powerful 2-stroke Blue Bird engines, the result of 40 years of design and production experience.



Winches



	TW 610 ST	TWH 500
	COD. 881930	COD. 883500
Engine	Blue Bird 2-stroke*	Honda 4-stroke
Displacement	57.9 cc	47.9 cc
Power	2.8 kW/7000 rpm	1.47 kW/7000 rpm
Suggested rope	Polyester Ø 10mm Not included	Polyester Ø 10mm Not included
Rope winding speed	25 metres/min	25 metres/min
Direct pulling	600 kg	400 kg
Weight	10.5 kg	9.9 kg
Retail price	€ 719,67	€ 790,16

* 2% mixture with synthetic oil



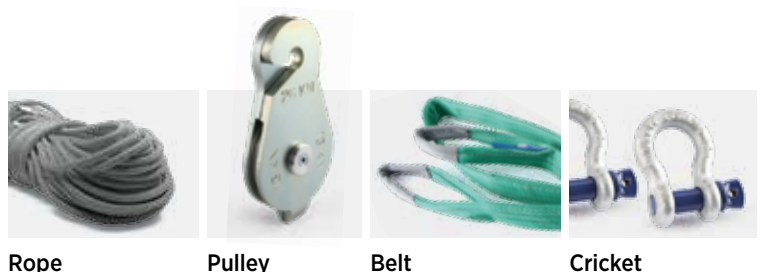
	FW 1610 STK	FW 1610 ST
	COD. 883680	COD. 881940
Engine	Blue Bird 2-stroke*	Blue Bird 2-stroke*
Displacement	57.9 cc	57.9 cc
Power	2.8 kW/7000 rpm	2.8 kW/7000 rpm
Drum capacity	80 metres Ø 5 mm Kevlar rope Included	80 metres Ø 5 mm steel cable Included
Rope winding speed	25 metres/min	25 metres/min
Direct pulling	1300 kg	1300 kg
Pulling with support pulley	2600 kg	2600 kg
Rope guide	Yes	Yes
Automatic brake	Yes	Yes
Weight	28 kg including rope	35 kg including cable
Retail price	€ 1.649,18	€ 1.459,83

* 2% mixture with synthetic oil

Accessories for winches



Backpack for TW winch



Rope

Pulley

Belt

Cricket

Backpack for TW winch	COD. 731080	€ 112,00
Polyester rope Ø 10 mm x 50 mt	COD. 630230	€ 92,00
Polyester rope Ø 10 mm x 100 mt	COD. 630330	€ 184,00
Steel cable for FW winch	COD. 630280	€ 100,00
Dyneema-kevlar rope Ø 5mm x 80 mt	COD. 630340	€ 308,00
1300 kg pulley	COD. 392550	€ 116,00
Anchoring belt 1 mt - 2000 kg	COD. 630290	€ 11,80
Anchoring belt 2 mt - 2000 kg	COD. 630300	€ 14,50
2 tons cricket	COD. 392520	€ 5,50



HB 26

COD. 879480

Honda engine	GX 25 - 4-stroke 25 cc
Power	0.72 kW (1 HP) 7000 rpm
Fuel	Gasoline
Beating unit	Bosch GBH 2-26
Rated RPM	0 - 850
Beats per minute	0 - 3900
Single beat power	3 Joule
Tools connection	SDS-plus
Drilling capacity	26 mm
Weight *	6.5 kg
Dimensions (mm)	555 x 215 x 265 (h)
Retail price	€ 1.309,83

* Weight without fuel



BHB 40 4T

COD. 883250

BHB 40 2T

COD. 883670

Engine	Honda GX35 - 35.8 cc 4-stroke	Blue Bird - 44.3 cc 2-stroke
Power	1 kW (1.3 HP) 7000 rpm	2 kW @ 7500 rpm
Fuel	Gasoline	Mixture
Beating unit	Bosch GBH 5-40 D	Bosch GBH 5-40 D
Rated RPM	0 - 320	0 - 320
Beats per minute	0 - 2900	0 - 2900
Single beat power	8.5 Joule	8.5 Joule
Tools connection	SDS-max	SDS-max
Drilling capacity	40 mm on concrete and helicoidal bit 55 mm on concrete and special bit 90 mm on masonry and front crown	40 mm on concrete and helicoidal bit 55 mm on concrete and special bit 90 mm on masonry and front crown
Weight *	11 kg	11 kg
Dimensions (mm)	720 x 265 x 260 (h)	720 x 265 x 260 (h)
Retail price	€ 2.179,50	€ 2.179,50

* Weight without fuel

BB 52

COD. 882020



Blue Bird engine	53.2 cc - 2-stroke*
Power	2.4 kW @ 7000 rpm
Fuel	Mixture
Beating unit	Bosch UBH 12-520
Rated RPM	0 - 220
Beats per minute	0 - 2150
Single beat power	19 Joule
Tools connection	SDS-max
Drilling capacity	52 mm on concrete and helicoidal bit 55 mm on concrete and special bit 90 mm on masonry and front crown
Weight **	15.3 kg
Dimensions (mm)	870 x 270 x 300
Retail price	€ 2.829,50

* 2% mixture with synthetic oil ** Weight without fuel

Robot mowers



Fabbrica motori dal 1978

Blue Bird
Industries 

The evolution of lithium batteries and continuous innovation in electronics has led Blue Bird to include the new LEO robotic lawnmower in the wide range of gardening products.

Easy to install and use, LEO turns out to be an extremely versatile machine, able to manage areas with uneven surfaces and significant slopes. The powerful lithium battery allows the LEO robot to operate on areas of different sizes simply by selecting the cutting area.

The LEO robot turns out to be the best companion for a simple and efficient management of your lawn.



Robot mowers



Rain sensor

Control panel

3 cutting blades

Charging bay



Charging bay



LEO 600

COD. 885140

Lithium battery	28 V- 2 Ah
Cutting width	18 cm
Blades	3 floating blades
Cutting routine	Random straight lines
Working surface	Up to 600 sqm
Working time	45 min
Charging time	45 min
Max slope	20°
Max speed	0.5 m/sec
Retail price	€ 600,00



Charging bay



LEO 1000

COD. 883520

Lithium battery	28 V- 4 Ah
Cutting width	24 cm
Blades	3 floating blades
Cutting routine	Random straight lines
Working surface	300 / 600 / 1000 sqm
Working time	45 min
Charging time	1 hour
Max slope	30°
Max speed	0.5 m/sec
Retail price	€ 711,47



Control panel



Cutting height regulation



3 cutting blades



Charging bay

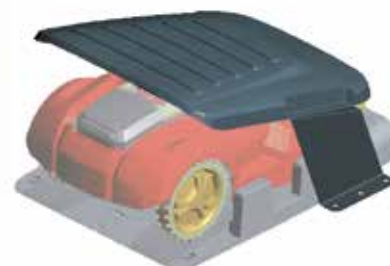
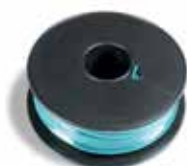


LEO 1500

COD. 883540

Lithium battery	28 V- 4 Ah
Cutting width	24 cm
Blades	3 floating blades
Cutting routine	Random straight lines
Working surface	500 / 1000 / 1500 sqm
Working time	90 min
Charging time	2 hourS
Max slope	30°
Max speed	0.5 m/sec
Retail price	€ 768,85

Accessories for Robot



Stick for perimeter cable	COD. 547880	€ 0,51
Perimeter cable reel - 100 m	COD. 547890	€ 83,60
Charging bay cover for LEO 1000/1500	COD. 547900	€ 60,65
Charging bay cover for LEO 600	COD. 548040	€ 60,65

Lawn mowers / Scarifiers

Fabbrica motori dal 1978

Blue Bird
Industries 

The wide range of lawnmowers offered by Blue Bird Industries is able to meet the most varied needs of both the amateur and professional user. Starting from the basic models, light and easily manageable, ideal for the home garden and for surfaces up to 500 meters. Following on to the self-propelled lawnmowers with steel or aluminum body, which guarantee great reliability and cutting quality in all situations and with surfaces up to 3000 meters. All models are equipped with central cutting height adjustment and grass collection basket; the biggest models are equipped with a three-speed gearbox.



Ergonomic handle

Throttle lever

Central height adjustment

4-stroke engine

Steel deck

Side discharge cover

Lawn mowers / Scarifiers



	LME 1200	LME 1600
	COD. 882270	COD. 882280
Engine	1200 W – 230 V 50 Hz	1600 W – 230 V 50 Hz
Cutting width	32 cm	38 cm
Cutting height	3 positions	6 positions
Cutting height adjustment	Manual	Central
Deck	Composite	Composite
Grass collecting bag	25 lt	40 lt
Traction	No	No
Weight	10.1 kg	13.6 kg
Retail price	€ 85,00	€ 120,00



	SPRINT B42
	COD. 885660
BBI engine	146 cc
Cutting width	42 cm
Cutting height	5 positions (2.5 – 7.5 cm)
Cutting height adjustment	Central
Wheels size	Front 6" – back 7"
Deck	Metal
Grass collecting bag	40 lt
Traction	No
Weight	23 kg
Retail price	€ 214,75



	SPRINT B46 T
	COD. 885670
BBI engine	146 cc
Cutting width	46 cm
Cutting height	7 positions (2.5 – 7.5 cm)
Cutting height adjustment	Central
Wheels size	Front 7" – back 8"
Deck	Metal
Grass collecting bag	50 lt
Traction	Yes
Accessories included	Mulching kit – side discharge
Weight	30 kg
Retail price	€ 290,16



SPRINT H46 T

COD. 885690

Honda engine	GCVx170 - 166 cc
Cutting width	46 cm
Cutting height	7 positions (2.5 - 7.5 cm)
Cutting height adjustment	Central
Wheels size	Front 7" - back 8"
Deck	Metal
Grass collecting bag	50 lt
Traction	Yes
Accessories included	Mulching kit - side discharge
Weight	30 kg
Retail price	€ 500,00



SPRINT B51 T

COD. 885680

BBI engine	173 cc
Cutting width	51 cm
Cutting height	7 positions (2.5 - 7.5 cm)
Cutting height adjustment	Central
Wheels size	Front 7" - back 8"
Deck	Metal
Grass collecting bag	60 lt
Traction	Yes
Accessories included	Mulching kit - side discharge
Weight	39 kg
Retail price	€ 330,32



SPRINT H51 T

COD. 885700

Honda engine	GCVx200 - 201 cc
Cutting width	51 cm
Cutting height	7 positions (2.5 - 7.5 cm)
Cutting height adjustment	Central
Wheels size	Front 7" - back 8"
Deck	Metal
Grass collecting bag	60 lt
Traction	Yes
Accessories included	Mulching kit - side discharge
Weight	39 kg
Retail price	€ 530,32

Lawn mowers / Scarifiers



TAURUS L41	
COD. 885760	
Loncin engine	123 cc
Cutting width	41 cm
Cutting height	6 positions (2.5 - 7.5 cm)
Cutting height adjustment	Central
Deck	High quality steel
Grass collecting bag	45 lt
Traction	No
Weight	23 kg
Retail price	€ 224,59



TAURUS L46	
COD. 885520	
Loncin engine	166 cc
Cutting width	46 cm
Cutting height	6 positions (2.5 - 7.5 cm)
Cutting height adjustment	Central
Deck	High quality steel
Grass collecting bag	60 lt
Traction	No
Weight	29 kg
Retail price	€ 300,00



TAURUS L46 T	
COD. 885620	
Loncin engine	139 cc
Cutting width	46 cm
Cutting height	6 positions (2.5 - 7.5 cm)
Cutting height adjustment	Central
Deck	High quality steel
Grass collecting bag	60 lt
Traction	Yes
Accessories included	Mulching kit - side discharge
Weight	33 kg
Retail price	€ 319,67



	TAURUS L46 TWS	TAURUS H46 TWS
	COD. 885530	COD. 885540
Engine	Loncin - 159 cc	Honda GCVx170 - 166 cc
Cutting width	46 cm	46 cm
Cutting height	6 positions (2.5 - 7.5 cm)	6 positions (2.5 - 7.5 cm)
Cutting height adjustment	Central	Central
Deck	High quality steel	High quality steel
Grass collecting bag	60 lt	60 lt
Traction	Yes	Yes
Accessories included	Mulching kit - side discharge	Mulching kit - side discharge
Weight	33 kg	33 kg
Retail price	€ 435,24	€ 590,16



	TAURUS L51 T	TAURUS L51 TI
	COD. 885630	COD. 885640
Loncin engine	196 cc	Instart - 196 cc
Cutting width	51 cm	51 cm
Cutting height	6 positions (2.5 - 7.5 cm)	6 positions (2.5 - 7.5 cm)
Cutting height adjustment	Central	Central
Deck	High quality steel	High quality steel
Grass collecting bag	65 lt	65 lt
Traction	Yes	Yes
Accessories included	Mulching kit - side discharge	Mulching kit - side discharge
Weight	35 kg	35 kg
Retail price	€ 375,40	€ 480,32



Lawn mowers / Scarifiers



	TAURUS L51 TWS	TAURUS H51 TWS
	COD. 885550	COD. 885560
Engine	Loncin - 196 cc	Honda GCVx200 - 201 cc
Cutting width	51 cm	51 cm
Cutting height	6 positions (2.5 - 7.5 cm)	6 positions (2.5 - 7.5 cm)
Cutting height adjustment	Central	Central
Deck	High quality steel	High quality steel
Grass collecting bag	70 lt	70 lt
Traction	Yes	Yes
Accessories included	Mulching kit - side discharge	Mulching kit - side discharge
Weight	47 kg	47 kg
Retail price	€ 485,24	€ 650,00



	TAURUS L56 TW
	COD. 885570
Engine	Loncin - 196 cc
Cutting width	56 cm
Cutting height	5 positions (3 - 7.5 cm)
Cutting height adjustment	Central
Deck	High quality steel
Grass collecting bag	75 lt
Traction	Yes - 4 speed
Accessories included	Mulching kit - side discharge
Weight	47 kg
Retail price	€ 509,83



	TAURUS BS53 TWA
	COD. 879040
Engine	B&s 675 EXI - 163 cc
Cutting width	53 cm
Cutting height	7 positions (2.5 - 8 cm)
Cutting height adjustment	Central
Deck	Aluminum
Grass collecting bag	70 lt
Traction	Yes
Accessories included	Mulching kit
Weight	45 kg
Retail price	€ 700,00



TAURUS K51 PRO

COD. 885580

Engine	Kawasaki FJ180V - 179 cc
Cutting width	51 cm
Cutting height	6 positions (3 - 9 cm)
Cutting height adjustment	Central
Deck	High quality steel
Grass collecting bag	70 lt
Traction	Yes - 3 speed
Accessories included	Mulching kit - side discharge
Weight	47 kg
Retail price	€720,49



Lawn scarifier

TAURUS BS51 S

COD. 885590

Engine	B&S XR 750
Working width	51 cm
Working height	5 positions
Working height adjustment	Central
Deck	High quality steel
Cutting system	Straight blades
Traction	Yes
Weight	45 kg
Retail price	€ 600,00





Lawn tractors

The LT SD and LT C garden tractors have joined the broad line of Blue Bird gardening products, representing a mix of power, comfort and design.

These are exceptional tools for landscaping suitable for both users who want to keep their garden tidy, and for more professionals who want to take care of large parks and green areas.

The **LT SD line with side discharge** consists of two models:

The smallest named LT SD 150-98. This has an efficient engine of 432 c.c. of displacement and is characterized by a 2-blade cutting deck with a cutting width of 98 cm and anti-scalp wheel. The larger model, named LT SD 170-108, is equipped with an engine with higher power, 452 c.c. of displacement, and the width of the 2-blade cutting deck is 108 cm with anti-scalp wheel.

The **LT C line with rear exhaust** consists of two models:

The first called LT C 150-84 which features an engine of 432 c.c. of displacement and is characterized by a 2-blade cutting deck with a cutting width of 98 cm with anti-scalp wheel. The second named LT C 170-98 is equipped with an engine with greater power, 452 c.c. of displacement, and the width of the 2-blade cutting deck is 108 cm with anti-scalp wheel.



For all models, the cutting height is adjustable in 7 different positions, from 25 mm to 80 mm. The machines are equipped with hydrostatic transmission that allows complete speed control via a pedal for both forward and reverse. In addition, the activation of the blades takes place via an electromagnetic clutch by simply pressing a button.

The machines are supplied as standard with:

- mulching kit
- tow hitch
- front bumper
- battery charger / maintenance

Lawn tractors



LT SD 150-98

COD. 884150

BBI engine	432 cc
Cutting width	98 cm
Cutting height	7 positions (2.5 - 8 cm)
Side discharge	Yes
Transmission	Hydro
Blades engagement	Electromagnetic
Mulching kit	Included
Tow hitch	Included
Front Bumper	Included
Battery charger	Included
Retail price	€ 2.030,32



LT SD 170-108

COD. 884160

BBI engine	452 cc
Cutting width	108 cm
Cutting height	7 positions (2.5 - 8 cm)
Side discharge	Yes
Transmission	Hydro
Blades engagement	Electromagnetic
Mulching kit	Included
Tow hitch	Included
Front Bumper	Included
Battery charger	Included
Retail price	€ 2.280,32



Snow plug

COD. 988000000023

€ 588,52



LT C 150-84

COD. 884170

BBI engine	432 cc
Cutting width	84 cm
Cutting height	7 positions (2.5 - 8 cm)
Back discharge	Yes
Transmission	Hydro
Blades engagement	Electromagnetic
Mulching kit	Included
Tow hitch	Included
Front Bumper	Included
Battery charger	Included
Retail price	€ 2.480,32



LT C 170-98

COD. 884180

BBI engine	452 cc
Cutting width	98 cm
Cutting height	7 positions (2.5 - 8 cm)
Back discharge	Yes
Transmission	Hydro
Blades engagement	Electromagnetic
Mulching kit	Included
Tow hitch	Included
Front Bumper	Included
Battery charger	Included
Retail price	€ 2.700,00



Large surface mowers



LM 715 PRO

	COD. 882470
Engine	B&S - 344 cc
Power	10.5 HP
Cylinders	1
Transmission	3 speed
Cutting	Side discharge
Cutting width	71.1 cm
Cutting height	6 positions
Speed	3 forward speed
Weight	154 kg
Retail price	€ 1.700,00



Kit mulching ZTR 50 PRO

COD. 733140 € 159,83



ZTR 50 PRO

	COD. 882480
Engine	Kawasaki FR691V - 726 cc
Power	15.4 kW (20.6 h6) / 3600 rpm
Cylinders	Twin
Transmission	Hydro
Blades engagement	Electromagnetic clutch
Cutting mode	Mulching kit - side discharge
Cutting width	127 cm
Cutting height	7 positions
Speed	1 forward - 1 back
Weight	270 kg
Peso	270 kg
Retail price	€ 6.200,00

Flail mowers



Blue Bird cutting machine range finds an important additional member with the FM 600 and FM 750 flail mowers. Thanks to their strength and cutting power, these mowers are suitable for demanding operation of mowing and removal of tall and compact grass, for cleaning in the undergrowth or near moat. The 3 forward speeds and the reverse gear, guarantee the perfect ability to adapt to every working conditions for the most efficient performance of the required activities.

FM 600

COD. 883190

Engine	Loncin - 4 stroke - 252 cc
Torque	15 Nm / 2800 rpm
Power	5.2 kW / 3600 rpm
Cutting width	60 cm
Number of knives	32
Trasmission	3 forward speeds + reverse
Turning radius	less than 1.2 mt
Dimensions	180 x 73 x 115
Weight	145 kg
Retail price	€ 2.450,00



FM 750

COD. 883200

Engine	Loncin - 4 stroke - 389 cc
Torque	25.1 Nm / 2500 rpm
Power	8.2 kW / 3600 rpm
Cutting width	75 cm
Number of knives	40
Trasmission	3 forward speeds + reverse
Turning radius	less than 1.2 mt
Dimensions	187 x 89 x 130
Weight	178 kg
Retail price	€ 3.278,68



Wheeled brushcutters

Fabbrica motori dal 1978

Blue Bird
Industries 

The Blue Bird wheeled brushcutters are particularly suited to deal with large areas, with very high grass and in presence of underbrush. Designed for mowing of hills and sloppy areas, can be an effective alternative to the traditional brushcutters with rigid shaft or backpack. The Blue Bird models are equipped with large wheels – that make the machine extremely agile and maneuverable – or small wheels with deep grooves that ensure exceptional traction even on very rugged terrains and in presence of steep slopes. Wheeled brushcutters are also equipped with a wide range of cutting applications that meet all the needs of the user. The choice of the cutting system depends on the type of work you will be doing and how you want to cut the grass. The cut with the blade ensures a high degree of shredding of the grass. Cutting with the nylon line, instead, ensures a medium degree of grinding and is effective for trimming around plants, walls, or to work in nurseries and crops. Finally, the rotor, a device equipped with four rotating and retractable (in the event of a collision) knives, allows mowing grass without crumbling it and therefore is perfect for the collecting with grass of any height.



Accelerator lever

Adjustable handle bars

Revolving handle

16" Wheels

Carter

Wire application



Wheeled brushcutters



FLO 6

FLO 7



OPTIONAL BLADE

Application FLO blade

Ø cut 53 cm COD. 730180

€ 149,18

	SPEED 6 LC	SPEED 6 BS	PRO SPEED 6 BS	SPEED 6 HO	PRO SPEED 6 HO
	COD. 882090	COD. 881990	COD. 882010	COD. 885350	COD. 885330
Blue Bird Engine	Loncin - 4 stroke	Briggs & Stratton range 675 - 4 stroke	Briggs & Stratton range 850 - 4 stroke	Honda GCV 170 4 stroke	Honda GCVx200 4 stroke
Displacement	196 cc	163 cc	190 cc	166 cc	201 cc
Torque (Nm) / Power (Kw)	12.4 Nm/2500 rpm	9.8 Nm/2600 rpm	11.5 Nm/2600 rpm	11.1 Nm/2500 rpm	12.7 Nm/2500 rpm
Cutting tool	Nylon line (optional blade application)	Nylon line (optional blade application)	Nylon line (optional blade application)	Nylon line (optional blade application)	Nylon line (optional blade application)
Speeds	3 forward speeds	3 forward speeds	3 forward speeds	3 forward speeds	3 forward speeds
Wheels	Alloy	Alloy	Alloy	Alloy	Alloy
Retail price	€ 898,36	€ 958,20	€ 1.088,52	€ 1.042,62	€ 1.092,62

	SPEED 7 LC	SPEED 7 BS	PRO SPEED 7 BS	SPEED 7 HO	PRO SPEED 7 HO
	COD. 882510	COD. 882520	COD. 882530	COD. 882540	COD. 882550
Blue Bird Engine	Loncin - 4 stroke	Briggs & Stratton range 675 - 4 stroke	Briggs & Stratton range 850 - 4 stroke	Honda GCV 170 4 stroke	Honda GCVx200 4 stroke
Displacement	196 cc	163 cc	190 cc	166 cc	201 cc
Torque (Nm) / Power (Kw)	12.4 Nm/2500 rpm	9.8 Nm/2600 rpm	11.5 Nm/2600 rpm	11.1 Nm/2500 rpm	12.7 Nm/2500 rpm
Cutting tool	Nylon line (optional blade application)	Nylon line (optional blade application)	Nylon line (optional blade application)	Nylon line (optional blade application)	Nylon line (optional blade application)
Speeds	3 forward speeds	3 forward speeds	3 forward speeds	3 forward speeds	3 forward speeds
Wheels	Alloy	Alloy	Alloy	Alloy	Alloy
Retail price	€ 955,73	€ 1.012,30	€ 1.135,25	€ 1.090,16	€ 1.137,70



DOMINO BLADE

Blade application

Ø cut 53 cm	COD. 729160
	€ 190,16

DOMINO THREAD

Thread application

Ø cut 60 cm	COD. 726330
	€ 62,30

	DOMINO TS LC	DOMINO TS PRO/LC	DOMINO TS	DOMINO TS PRO	DOMINO TS PRO/H
	COD. 882290	COD. 882300	COD. 880910	COD. 880210	COD. 885290
Engine	Loncin - 4 stroke	Loncin - 4 stroke	Briggs & Stratton 850 - 4 stroke	Briggs & Stratton 850 - 4 stroke	Honda GCVx200 4 stroke
Displacement	196 cc	196 cc	190 cc	190 cc	201 cc
Torque (Nm) / Power (Kw)	12.4 Nm/2500 rpm	12.4 Nm/2500 rpm	11.5 Nm/2600 rpm	11.5 Nm/2600 rpm	12.7 Nm/2500 rpm
Cutting tool	Nylon line or blade (according to application)	Nylon line or blade (according to application)	Nylon line or blade (according to application)	Nylon line or blade (according to application)	Nylon line or blade (according to application)
Cutting width	Nylon line or blade (according to application)	Nylon line or blade (according to application)	Nylon line or blade (according to application)	Nylon line or blade (according to application)	Nylon line or blade (according to application)
Speeds	1 forward speed	3 forward speeds + reverse	1 forward speed	3 forward speeds + reverse	3 forward speeds + reverse
Blade clutch brake	Yes	Yes	Yes	Yes + wheels brake	Yes + wheels brake
Wheels	Pneumatic	Pneumatic	Pneumatic	Pneumatic	Pneumatic
Weight	63.9 kg	64.5 kg	64 kg	65.6 kg	65.4 kg
Retail price	€ 1.120,49	€ 1.240,16	€ 1.255,73	€ 1.395,90	€ 1.470,49

Wheeled brushcutters



ALHAMBRA TS



ALHAMBRA TS PRO

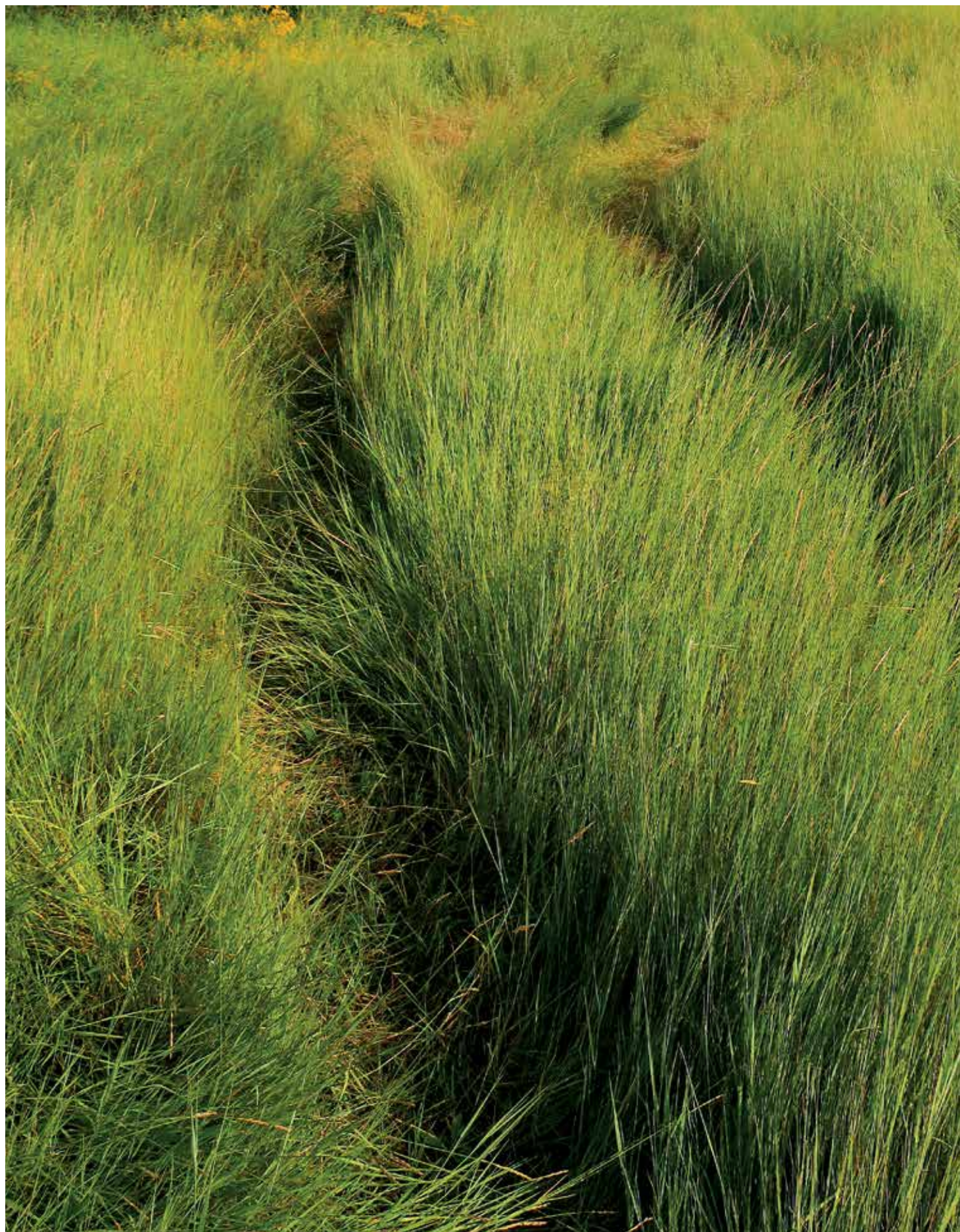


ADJUSTABLE GRASS GUARD

from 0 to 40 cm **COD. 727560**
€ 40,98

	ALHAMBRA TS LC	ALHAMBRA TS	ALHAMBRA TS 170 HO
	COD. 882310	COD. 880870	COD. 881770
Engine	Loncin - 4 stroke	Briggs & Stratton range 675 4 stroke	Honda GCV170 - 4 stroke
Displacement	196 cc	163 cc	166 cc
Torque (Nm) / Power (Kw)	12.4 Nm/2500 rpm	9.8 Nm/2500 rpm	11.1 Nm/2500 rpm
Cutting tool	With retractable blades	With retractable blades	With retractable blades
Cutting width	60 mm	60 mm	60 mm
Speeds	1 forward speed	1 forward speed	1 forward speed
Blade clutch brake	Yes	Yes	Yes
Wheels	Full	Full	Full
Weight	73.5 kg	73 kg	74.1 kg
Retail price	€ 1.240,16	€ 1.283,60	€ 1.360,65

	ALHAMBRA TS PRO LC	ALHAMBRA TS PRO	ALHAMBRA TS PRO 160 HO
	COD. 882320	COD. 880890	COD. 880900
Engine	Loncin - 4 stroke	Briggs & Stratton range 850 4 stroke	GXV 160 - 4 stroke
Displacement	196 cc	190 cc	163 cc
Torque (Nm) / Power (Kw)	12.4 Nm/2500 rpm	11.5 Nm/2600 rpm	9.6 Nm/2500 rpm
Cutting tool	With retractable blades	With retractable blades	With retractable blades
Cutting width	60 mm	60 mm	60 mm
Speeds	3 forward speeds + reverse	3 forward speeds + reverse	3 forward speeds + reverse
Blade clutch brake	Yes	Yes	Yes
Wheels	Full	Full	Full
Weight	74.6 kg	75.7 kg	77.6 kg
Retail price	€ 1.393,44	€ 1.531,15	€ 1.645,08



Motor tillers



Extension for tiller discs 80 cm

COD. 727270 € 58,00



Kit front travel wheel

COD. 726690 € 24,01

MTH 60	
COD. 884270	
Honda engine	GCV 170
Displacement	166 cc
Fuel	Petrol
Speed	1 forward speed
Handle	height and side-adjustment
Transmission	Oil bath gears
Tillers width	60 cm
Tillers	Ø 30 cm - tiller discs Ø 20 cm
Front travel wheel	Included
Kit tillers extension	Optional
Weight*	40 kg
Retail price	€ 680,32

*Weight without fuel



MTL 60	
COD. 883660	
Engine	Loncin
Displacement	196 cc
Fuel	Petrol
Speed	1 forward speed
Handle	height and side-adjustment
Transmission	Oil bath gears
Tillers width	60 cm
Tillers	Ø 30 cm - tiller discs Ø 20 cm
Front travel wheel	Included
Kit tillers extension	Optional
Retail price	€ 550,00



MTB 60	
COD. 880250	
Briggs & Stratton engine	675 Series
Displacement	163 cc
Fuel	Petrol
Speed	1 forward speed
Handle	height and side-adjustment
Transmission	Oil bath gears
Tillers width	60 cm
Tillers	Ø 30 cm - tiller discs Ø 20 cm
Front travel wheel	Included
Kit tillers extension	Optional
Weight*	40 kg
Retail price	€ 600,00

*Weight without fuel



MTB 38	
COD. 883440	
Engine	B&S 450 E
Displacement	125 cc
Fuel	Petrol
Speed	1 forward speed
Transmission	Belt
Tillers width	380 mm
Tillers diameter	250 mm
Tillers speed	120 rpm
Weight*	30 kg
Retail price	€ 360,65

*Weight without fuel



MTL 50	
COD. 883450	
Engine	Loncin LC1P65FC
Displacement	159 cc
Fuel	Petrol
Speed	1 forward speed
Transmission	Belt
Tillers width	500 mm
Tillers diameter	250 mm
Tillers speed	90 rpm
Weight*	42.5 kg
Retail price	€ 450,00

*Weight without fuel

Crawler carriers



Fabbrica motori dal 1978

Blue Bird
Industries 

The Blue Bird crawler carriers are faithful work partners in every situation where heavy loads need to be moved easily, even in the presence of steep slopes. The compact dimensions make them perfect for use on terraces and areas with limited operation spaces. Features such as idler springs, the piston which helps the operator in overturning the box and the extended and removable sides, make the Blue Bird carriers a complete and extremely reliable machine.



Crawler carriers



CARRIER 300

COD. 881910

Engine	Loncin - 4 stroke
Displacement	196 cc
Power	6.5 Hp
Transmission	3 forward speeds + reverse
Load capacity	300 kg
Dumper box dimensions	910÷1040 x 600÷860
Dumper box height	204 mm + banks
Dumper overturning	manual with piston
Track width	180 mm with track tension springs
Weight	178 kg
Snow blades	Optional
Retail price	€ 1.588,52



CARRIER 500

COD. 883090

CARRIER 500 H

COD. 885160

Engine	Loncin	Loncin
Displacement	196 cc	196 cc
Power	6.5 Hp	6.5 Hp
Transmission	3 forward speeds + reverse	3 forward speeds + reverse
Load capacity	500 kg	500 kg
Dumper box dimensions	1025÷1150 x 625÷885	1025÷1155 x 625÷885
Dumper box height	325 mm + banks	325 mm + banks
Overturning dumper	manual with piston	hydraulic
Track width	180 mm with track tension springs	180 mm with track tension springs
Weight	228 kg	256.5 kg
Retail price	€ 1.839,34	€ 2.450,00



CARRIER 500 DH

COD. 883100

Engine	Loncin - 4 stroke
Displacement	196 cc
Power	6.5 Hp
Transmission	3 forward speeds + reverse
Load capacity	500 kg
Dumper box dimensions	950 x 680
Dumper box height	465 mm
Overturning dumper	Hydraulic
Track width	180 mm with track tension springs
Weight	256 kg
Retail price	€ 2.450,00



CARRIER 500 DSH

	COD. 884190
Engine	Loncin 196 cc
Power	6.5 Hp
Transmission	6 forward speeds + 2 reverse
Load capacity	500 kg
Dumper box dimensions	950 x 680
Dumper box height	465 mm
Overturning dumper	Hydraulic
Track width	180 mm
Weight	250 kg
Retail price	€ 2.480,32



CARRIER 500 DLH

	COD. 884200
Engine	Loncin 270 cc
Power	9 Hp
Transmission	Hydrostatic
Load capacity	500 kg
Dumper box dimensions	1065 x 715 mm
Dumper box height	660 mm
Overturning dumper	Hydraulic
Track width	180 mm
Weight	360 kg
Retail price	€ 4.900,00

Carriers accessories

Snow blade 31450 for carrier 300	754380	€ 229,50
Snow blade 31455 for carrier 500 - 500H	754740	€ 245,90



Log splitters



LSE 5000

COD. 883290

Engine	single phase 2200W / 230V
Splitting length	520 mm
Splitting diameter	250 mm
Splitting force	5 ton
Weight	50 kg
Retail price	€ 298,36



LSE 7000

COD. 883300

Engine	single phase 3000W S6 / 230V
Splitting length	550 mm
Splitting diameter	300 mm
Splitting force	7 ton
Weight	98.2 kg
Retail price	€ 580,32

LSE 8000

COD. 883310

Engine	single phase 3000W S6 / 230V
Splitting length	550 mm
Splitting diameter	300 mm
Splitting force	8 ton
Weight	110 kg
Retail price	€ 640,16





LSE 11000

COD. 883730

Engine	single phase 3000W / 230V
Splitting length	1040 mm
Splitting diameter	300 mm
Splitting force	11 ton
Weight	174 kg
Retail price	€ 990,16



LSL 16000

COD. 884110

Engine	Loncin 6.50 Hp
Splitting length	1100 mm
Splitting diameter	300 mm
Splitting force	16 ton
Weight	248.5 kg
Retail price	€ 1.780,32

LSL 22000

COD. 884120

Engine	Loncin 10 Hp
Splitting length	1100 mm
Splitting diameter	350 mm
Splitting force	22 ton
Weight	299.5 kg
Retail price	€ 2.200,00



LS PTO 30000

COD. 884350

Engine	PTO - tractor mounted
Splitting length	1100 mm
Splitting diameter	400 mm
Splitting force	30 ton
Weight	346 kg
Retail price	€ 2.700,00

Motor pumps

In the motor pump segment, Blue Bird takes advantage of more than twenty years of collaboration with KOSHIN, Japanese manufacturer number 1 in the world by market share. Thanks to the control of the entire process from product development to production and after-sales support, Koshin can guarantee the very high quality of its motor pumps, guaranteeing the efficiency and durability of the product in all conditions of use. The Koshin engine guaranteed by the manufacturer itself offers the best quality / price ratio, while the most demanding users will find the maximum performance in Honda engines.



* Weight without petrol and oil

WP 341	
COD. 879530	
Engine	2 stroke - 32.6 cc
Power	0.9 kW (1.2 CV) 8000 rpm
Fuel	Mixture 2% synthetic oil
Hose couplings Ø	1"
Max. lift	30 m
Max. delivery	100 l/min
Max. suction head	8 m
Net weight*	8 kg
Dimensions	355 x 285 x 395 mm
Retail price	€ 177,04



* Weight without petrol and oil

	SEV-50X	SEV-80X
	COD. 878640	COD. 878650
Koshin engine	K 180 - 4 stroke - 179 cc	K 180 - 4 stroke - 179 cc
Power	3.1 kW (4.2 CV) 3600 rpm	3.1 kW (4.2 CV) 3600 rpm
Fuel	Petrol	petrol
Hose couplings Ø	2"	3"
Max. lift	25 m	25 m
Max. delivery	620 l/min	1050 l/min
Max. suction head	8 m	8 m
Net weight*	24.2 kg	27.7 kg
Dimensions	514 x 410 x 426 mm	553 x 435 x 483 mm
Retail price	€ 300,00	€ 335,24



* Weight without petrol and oil

SEH-50X	
COD. 880270	
Honda engine	GX 120 - 4 stroke - 118 cc
Power	2.6 kW (3.5 CV) 3600 rpm
Fuel	Petrol
Hose couplings Ø	2"
Max. lift	30 m
Max. delivery	600 l/min
Max. suction head	8 m
Net weight*	24 kg
Dimensions	493 x 377 x 415 mm
Note	Oil level alert
Retail price	€ 540,16



* Weight without petrol and oil

SEH-80X

COD. 880280

Honda engine	GX 160 - 4 stroke - 163 cc
Power	3.6 kW (4.9 CV) 3600 rpm
Fuel	Petrol
Hose couplings Ø	3"
Max. lift	26 m
Max. delivery	930 l/min
Max. suction head	8 m
Net weight*	34 kg
Dimensions	530 x 399 x 473 mm
Note	Oil level alert
Retail price	€ 600,00



* Weight without petrol and oil

SERH-50B

COD. 872620

Honda engine	GX 160 - 4 stroke - 163 cc
Power	3.6 kW (4.9 CV) 3600 rpm
Fuel	Petrol
Hose couplings Ø	2"
Max. lift	57 m
Max. delivery	440 l/min
Max. suction head	8 m
Net weight*	34 kg
Dimensions	545 x 415 x 455 mm
Note	Oil level alert
Retail price	€ 810,00

For muddy water



* Weight without petrol and oil

STV-50X

COD. 880980

STV-80X

COD. 881000

Koshin engine	K 180 - 4 stroke - 179 cc	K 180 - 4 stroke - 179 cc
Power	3.1 kW (4.2 CV) 3600 rpm	3.1 kW (4.2 CV) 3600 rpm
Fuel	Petrol	petrol
Hose couplings Ø	2"	3"
Max. lift	26 m	26 m
Max. delivery	580 l/min	900 l/min
Max. suction head	8 m	8 m
Net weight*	31 kg	32.9 kg
Dimensions	554 x 400 x 471 mm	593 x 425 x 528 mm
Retail price	€ 415,57	€ 455,00

Multi-tool accessories

In addition to producing the most varied types of brushcutters, Blue Bird offers a wide range of accessories for these machines, thus always ensuring the right tool for each type of job. Among the accessories we remember the chain pruner, essential for performing perfect limbing; the hedge trimmer kit, to be applied to the shaft of the brush cutter to cut hedges and bushes even at high heights and at the most diverse inclinations; the very comfortable weeder, various types of grass cutting heads, straps, helmets, plastic and metal mesh visors, goggles.

To conclude, we would like to remind you of the very convenient bellows grease nipples for gearcase and the jars of synthetic oil essential for a high quality blend, which guarantees longevity to your engines.



CHAIN PRUNER

	COD. 727350	COD. 730020
Shaft diameter	24 mm	26 mm
	€ 107,00	€ 110,00



HEDGE TRIMMER

	COD. 727340	COD. 730010
Shaft diameter	24 mm	26 mm
	€ 107,00	€ 110,00



SHAFT EXTENSION

	COD. 727360	COD. 730040
Shaft diameter	24 mm	26 mm
	€ 32,00	€ 35,00



OLIVE HARVESTER

	COD. 729250
Shaft diameter	24 mm
	€ 800,00



BRUSHCUTTER

	COD. 727330	COD. 730000
Shaft diameter	24 mm	26 mm
	€ 80,00	€ 83,00



HEDGE TRIMMER KIT

For brushcutters with shaft Ø 24 mm	COD. 725030	€ 275,00
For brushcutters with shaft Ø 27 mm	COD. 725040	€ 280,00



Bar length 10" – chain 3/8"
low profile 38 drive links

CHAIN PRUNER

For brushcutters with shaft Ø 24 mm	COD. 725300	€ 146,00
For brushcutters with shaft Ø 27 mm	COD. 724680	€ 146,00



WEEDER

Weeder tool W2	COD. 731130	€ 175,00
Weeder tool W4	COD. 731140	€ 204,00



SHOULDER STRAP WITH HIP PROTECTION

Ø 24 / 27 / 28 mm	COD. 751620	€ 7,00
-------------------	-------------	--------

SIMPLE SHOULDER STRAP

Ø 24 / 27 / 28 mm	COD. 751580	€ 4,80
-------------------	-------------	--------



DOUBLE PROFESSIONAL SHOULDER STRAP

With 5 regulations	COD. 751630	€ 16,60
Quick unlock	COD. C19994	€ 21,70
With hip protection	COD. 754570	€ 21,70



PROFESSIONAL FACE SHIELD

Polycarbonate	COD. 751840	€ 7,36
---------------	-------------	--------



PROFESSIONAL FACE SHIELD

Metallic net	COD. 751860	€ 7,36
--------------	-------------	--------

SYNTHETIC OIL for 2-stroke engines



PROFESSIONAL - RED COLOR

25 bottles x 100 ml	COD. 725410	€ 56,80
1 lt bottle	COD. 210080	€ 11,00

SYNTHETIC OIL for 2-stroke engines



PROFESSIONAL TOP PERFORMANCE - BLUE COLOR

25 bottles x 100 ml	COD. 731090	€ 68,80
1 lt bottle	COD. 210360	€ 17,00



GREASER

25 dispensers x 50 gr	COD. 724060	€ 42,50
-----------------------	-------------	---------

Brushcutters accessories



FLASH WORK CUTTING HEAD

Pitch M 10x1 F	COD. 732130	€ 18,00
Pitch M 10 x 1,25 F		

ADAPTER BOLTS FOR FLASH WORK CUTTING HEAD

M7x1 SX M	COD. K00401045	€ 2,40
M8x1,25 SX F	COD. K00401046	€ 2,40
M8x1,25 SX M	COD. K00401061	€ 2,40
M10x1 SX F	COD. K00401047	€ 2,40
M10x1,25 SX M	COD. K00401048	€ 2,40
M10x1,25 SX F	COD. K00401062	€ 2,40
M10x1,5 SX M	COD. K00401049	€ 2,40
M10x1,5 SX F	COD. K00401050	€ 2,40
M12x1,25 SX F	COD. K00401051	€ 2,40
M12x1,5 SX F	COD. K00401052	€ 2,40
M12x1,75 SX F	COD. K00401053	€ 2,40
3/8-24F SX F	COD. K00401054	€ 2,40
M14x1,5 SX F	COD. K00401057	€ 2,40



BUMP-N-WORK CUTTING HEAD

Ø 130 pitch 8x1,25 F L	COD. 733160	€ 11,02
Ø 130 pitch 10x1,25 F L	COD. 733170	€ 11,02
Ø 130 no pitch	COD. 733080	€ 11,02
Ø 109 no pitch	COD. 733090	€ 10,00
Ø 130 pitch 10x1 F L	COD. 733020	€ 11,02



FLASH CUTTING HEAD

Pitch 8x1,25 F	COD. 721010	€ 8,00
Pitch 10x1 F	COD. 720670	€ 8,00
Pitch 10x1,25 F	COD. 720680	€ 8,00



FLASH RAPID CUTTING HEAD

Pitch 8x1,25 F	COD. 722530	€ 10,10
Pitch 10x1 F	COD. 722540	€ 10,10
Pitch 10x1,25 F	COD. 722550	€ 10,10
Universal connection	COD. 723010	€ 10,10



FLASH LIGHT CUTTING HEAD

Pitch 8x1,25 F	COD. 723420	€ 9,00
Pitch 10x1 F	COD. 723430	€ 9,00
Pitch 10x1,25 F	COD. 723440	€ 9,00



TORNADO CUTTING HEAD

COD. 20052	€ 12,50
------------	---------



CICLONE CUTTING HEAD

COD. 20056	€ 17,10
------------	---------



SPEED UNIVERSAL CUTTING HEAD

2 cables	COD. 752950	€ 33,00
----------	-------------	---------

SPEED UNIVERSAL CUTTING HEAD

4 cables	COD. 752960	€ 43,00
----------	-------------	---------



TRIMMING LINE CUTTER

175 PCS boxes	COD. 546910	€ 1,00
---------------	-------------	--------



2-TOOTH GRASS CUTTING BLADE

SKS5 steel 255x1.6	COD. 600300	€ 5,20
SKS5 steel 300x1.8	COD. 600660	€ 5,50
Busatis steel 305x3	COD. 600630	€ 13,60
Steel 300x3	COD. 600830	€ 6,80
Unbreakable nylon 255x3	COD. 600120	€ 1,22



2-TOOTH MULCHING BLADE

Mulching steel 300x3	COD. 600820	€ 8,44
----------------------	-------------	--------



3-TOOTH GRASS CUTTING BLADE

SKS5 steel 255x1.4	COD. 600250	€ 6,55
38 CBI steel 250x3	COD. 600600	€ 7,62
38 CBI steel 300x3	COD. 600610	€ 8,44
Unbreakable nylon 255x3	COD. 600130	€ 1,55



4-TOOTH GRASS CUTTING BLADE

SKS5 steel 255x1.4	COD. 600050	€ 6,10
Unbreakable nylon 255x3	COD. 600140	€ 1,63



8-TOOTH GRASS CUTTING BLADE

SKS5 steel 255x1.4	COD. 600040	€ 6,31
--------------------	-------------	--------



CIRCULAR SAW GRASS CUTTING BLADE

SKS5 steel 255x1.4	COD. 600060	€ 8,36
--------------------	-------------	--------



WIDIA CIRCULAR SAW BLADE

Widia Ø 255x2	COD. 600640	€ 22,05
---------------	-------------	---------

Brushcutters accessories



High resistance Professional use



Brushcutters accessories



Round shape nylon line



●	1.6	2.0	2.4	2.7	3.0	3.3	4.0	5.0	6.0
	mt 15 COD. 542700 € 1,52	mt 15 COD. 542710 € 1,89	mt 15 COD. 542720 € 2,21	mt 15 COD. 545270 € 2,50	mt 15 COD. 543580 € 2,91	mt 15 COD. 543550 € 3,32	mt 15 COD. 543850 € 4,43	-	-
	mt 15 COD. 542690 € 1,89	mt 15 COD. 541140 € 2,25	mt 15 COD. 541150 € 2,62	mt 15 COD. 545260 € 2,91	mt 15 COD. 543300 € 3,32	mt 15 COD. 543400 € 3,69	mt 9 COD. 544380 € 3,40	-	-
	mt 180 ~ COD. 542840 € 8,11	mt 130 ~ COD. 541170 € 9,47	mt 90 ~ COD. 541200 € 9,26	mt 70 ~ COD. 545280 € 8,93	mt 60 ~ COD. 541210 € 9,47	mt 50 ~ COD. 541900 € 9,55	mt 35 ~ COD. 543030 € 9,84	-	-
	mt 100 ~ COD. 542850 € 4,63	mt 100 ~ COD. 540800 € 6,80	mt 100 ~ COD. 540810 € 9,10	mt 100 ~ COD. 545300 € 11,02	mt 100 ~ COD. 540820 € 13,93	mt 100 ~ COD. 541910 € 16,52	-	-	-
	mt 750 ~ COD. 542860 € 16,31	mt 520 ~ COD. 540870 € 16,31	mt 360 ~ COD. 540880 € 16,31	mt 310 ~ COD. 545250 € 16,31	mt 240 ~ COD. 540890 € 16,31	mt 210 ~ COD. 541880 € 16,31	mt 150 ~ COD. 542910 € 16,31	COD. 544550 € 16,31	COD. 545140 € 16,31
	mt 3750 ~ COD. 542860-10K € 14,70	mt 2600 ~ COD. 540870-10K € 14,70	mt 1800 ~ COD. 540880-10K € 14,70	mt 1550 ~ COD. 545250-10K € 14,70	mt 1200 ~ COD. 540890-10K € 14,70	mt 1050 ~ COD. 541880-10K € 14,70	mt 750 ~ COD. 542910-10K € 14,70	-	-



Square shape nylon line



■	2.4	2.7	3.0	3.3	4.0
	mt 15 COD. 542750 € 2,38	mt 15 COD. 545220 € 2,66	mt 15 COD. 543590 € 3,11	mt 15 COD. 543150 € 3,61	mt 15 COD. 544340 € 5,20
	mt 15 COD. 542300 € 2,79	mt 15 COD. 544190 € 3,07	mt 15 COD. 543330 € 3,52	mt 15 COD. 544360 € 3,98	mt 9 COD. 544370 € 3,93
	mt 60 ~ COD. 542060 € 7,46	mt 50 ~ COD. 544110 € 7,46	mt 40 ~ COD. 542280 € 7,50	mt 40 ~ COD. 542990 € 8,81	mt 25 ~ COD. 543960 € 8,93
	mt 100 ~ COD. 542360 € 10,20	mt 100 ~ COD. 545290 € 12,21	mt 100 ~ COD. 542370 € 15,00	mt 100 ~ COD. 543000 € 18,11	-
	mt 345 ~ COD. 542320 € 16,31	mt 278 ~ COD. 544050 € 16,31	mt 232 ~ COD. 542310 € 16,31	mt 182 ~ COD. 542920 € 16,31	mt 110 ~ COD. 543710 € 16,31
	mt 1725 ~ COD. 542320-10K € 14,70	mt 1390 ~ COD. 544050-10K € 14,70	mt 1160 ~ COD. 542310-10K € 14,70	mt 910 ~ COD. 542920-10K € 14,70	mt 550 ~ COD. 543710-10K € 14,70



Star shape nylon line



★	2.4	3.0	3.3	★	2.4	3.0	3.3
	mt 15 COD. 542770 € 2,01	mt 15 COD. 543980 € 2,58	mt 15 COD. 543530 € 2,95		mt 100 COD. 542240 € 7,91	mt 100 COD. 542250 € 11,68	mt 100 COD. 542260 € 14,02
	mt 15 COD. 542210 € 2,38	mt 15 COD. 543310 € 2,91	mt 15 COD. 544350 € 3,32		mt 345 ~ COD. 542330 € 16,31	mt 232 ~ COD. 542340 € 16,31	mt 182 ~ COD. 542350 € 16,31
	mt 180 ~ COD. 542070 € 8,03	mt 130 ~ COD. 542080 € 8,11	mt 90 ~ COD. 542090 € 8,40		mt 1725 COD. 542380-10K € 14,70	mt 1160 COD. 542340-10K € 14,70	mt 910 COD. 542350-10K € 14,70



Silenced nylon line



✕ 2.5	3.0	3.3
mt 86 ~ COD. 545360 € 10,15	mt 50 ~ COD. 545370 € 10,15	mt 37 ~ COD. 545380 € 10,15



Titanium power nylon line round shape



● 2.5	3.0	3.5	4.0
mt 80 ~ COD. 546720 € 11,00	mt 56 ~ COD. 546730 € 11,00	mt 41 ~ COD. 546740 € 11,00	mt 29 ~ COD. 547550 € 11,00
mt 15 ~ COD. 546690 € 3,90	mt 15 ~ COD. 546700 € 4,80	mt 15 ~ COD. 546710 € 5,70	-
mt 360 ~ COD. 546750 € 20,00	mt 240 ~ COD. 546760 € 20,00	mt 210 ~ COD. 546770 € 20,00	mt 150 ~ COD. 548030 € 20,00
mt 1800 ~ COD. 546750-10K € 18,50	mt 1200 ~ COD. 546760-10K € 18,50	mt 1050 ~ COD. 546770-10K € 18,50	-



Titanium power nylon line square shape



■ 3.0	3.5	4.0
mt 44 COD. 547530 € 11,90	mt 32 COD. 546930 € 11,90	mt 23 COD. 547540 € 11,90
mt 232 COD. 548000 € 20,00	mt 182 COD. 548010 € 20,00	mt 110 COD. 548020 € 20,00



Nylsaw nylon line



■ 3.0	3.5	4.0	4.5
mt 37 COD. 544740 € 12,90	mt 27 COD. 544750 € 12,90	mt 21 COD. 544760 € 12,90	mt 16 COD. 544770 € 12,90
35 fili COD. 545090 € 7,00	25 fili COD. 545100 € 7,00	20 fili COD. 545110 € 7,00	15 fili COD. 545120 € 7,00



Chainsaws accessories

SARP



CHAINS/100 FT Roll

1/4" - 1,3 mm - 0,50	S25100	€ 495,00
3/8" anti-bounce 1,1 mm - 0,43	SE1S100	€ 290,00
3/8" anti-bounce 1,3 mm - 0,50	SE3S100	€ 290,00
3/8" 1,3 mm - 0,50	SE3L100	€ 290,00
325" 1,3 mm - 0,50	SG3100	€ 325,00
325" 1,5 mm - 0,58	SG5100	€ 325,00
325" 1,6 mm - 0,63	SG6100	€ 325,00
325" 1,3 mm - 0,50	SG3C100	€ 324,18
325" 1,5 mm - 0,58	SG5C100	€ 355,00
325" 1,6 mm - 0,63	SG6C100	€ 355,00
3/8" 1,3 mm - 0,50	SD3100	€ 325,00
3/8" 1,5 mm - 0,58	SD5100	€ 325,00
3/8" 1,6 mm - 0,63	SD6100	€ 325,00
3/8" 1,3 mm - 0,50	SD3C100	€ 360,00
3/8" 1,5 mm - 0,58	SD5C100	€ 360,00
3/8" 1,6 mm - 0,63	SD6C100	€ 360,00
404" 1,6 mm - 0,63	SF6100	€ 370,00

SINGLE PACKING

1/4" 1,3 mm - 0,50 - 52 M	S25-52DL	€ 12,04
1/4" 1,3 mm - 0,50 - 60 M	S25-60DL	€ 13,85
1/4" 1,3 mm - 0,50 - 76 M	S25-76DL	€ 17,37
1/4" 1,3 mm - 0,50 - 84 M	S25-84DL	€ 19,18
3/8" mini LP 1,3 mm - 0,50 - 40 M	SE3L-40DL	€ 8,03
3/8" mini LP 1,3 mm - 0,50 - 45 M	SE3L-45DL	€ 8,93
3/8" mini LP 1,3 mm - 0,50 - 47 M	SE3L-47DL	€ 9,18
3/8" mini LP 1,3 mm - 0,50 - 50 M	SE3L-50DL	€ 9,75
3/8" mini LP 1,3 mm - 0,50 - 52 M	SE3L-52DL	€ 10,08
3/8" mini LP 1,3 mm - 0,50 - 53 M	SE3L-53DL	€ 10,32
3/8" mini LP 1,3 mm - 0,50 - 55 M	SE3L-55DL	€ 10,81

3/8" mini LP 1,3 mm - 0,50 - 56 M	SE3L-56DL	€ 10,98
3/8" mini LP 1,3 mm - 0,50 - 57 M	SE3L-57DL	€ 11,14
3/8" mini LP 1,1 mm - 0,43 - 39 M	SE1S-39DL	€ 7,70
3/8" mini LP 1,1 mm - 0,43 - 50 M	SE1S-50DL	€ 9,95
3/8" mini LP 1,3 mm - 0,50 - 40 M	SE1S-40DL	€ 7,95
3/8" mini LP 1,3 mm - 0,50 - 45 M	SE1S-45DL	€ 8,93
3/8" mini LP 1,3 mm - 0,50 - 52 M	SE1S-52DL	€ 10,08
3/8" mini LP 1,3 mm - 0,50 - 57 M	SE1S-57DL	€ 11,14
3/8" 1,5 mm - 0,58 - 68 M	SD5-68DL	€ 15,08
3/8" 1,5 mm - 0,58 - 72 M	SD5-72DL	€ 15,90
3/8" 1,6 mm - 0,63 - 66 M	SD6-66DL	€ 14,75
3/8" 1,6 mm - 0,63 - 72 M	SD6-72DL	€ 15,90
3/8" 1,5 mm - 0,58 - 68 M	SD5C-68DL	€ 16,39
3/8" 1,5 mm - 0,58 - 72 M	SD5C-72DL	€ 17,21

325" 1,3 mm - 0,50 - 64 M	SG3-64DL	€ 12,70
325" 1,3 mm - 0,50 - 66 M	SG3-66DL	€ 13,11
325" 1,3 mm - 0,50 - 72 M	SG3-72DL	€ 14,34
325" 1,5 mm - 0,58 - 64 M	SG5-64DL	€ 12,70
325" 1,5 mm - 0,58 - 66 M	SG5-66DL	€ 13,11
325" 1,5 mm - 0,58 - 68 M	SG5-68DL	€ 13,44
325" 1,5 mm - 0,58 - 72 M	SG5-72DL	€ 14,34
325" 1,6 mm - 0,63 - 62 M	SG6-62DL	€ 12,37
325" 1,6 mm - 0,63 - 67 M	SG6-67DL	€ 13,19
325" 1,6 mm - 0,63 - 68 M	SG6-68DL	€ 13,44
325" 1,6 mm - 0,63 - 74 M	SG6-74DL	€ 14,75
325" 1,3 mm - 0,50 - 72 M	SG3C-72DL	€ 15,57
325" 1,5 mm - 0,58 - 72 M	SG5-72DL	€ 16,54
325" 1,5 mm - 0,58 - 78 M	SG5-78DL	€ 16,88



ECOLOGIC CHAIN PROTECTIVE OIL

5 lt bottle COD. 210120 € 15,20



PROTECTION GOGGLES

COD. 21023 € 5,40



EAR PROTECTORS

Extra-light 140 gr COD. 122505 € 7,55



SARP

BARS

Bar 25 cm 10" - 40 drive links	S10E3MP40	€ 10,90
Bar 25 cm 10" - 40 drive links	S10E3MPP40	€ 10,98
Bar 30 cm 12" - 45 drive links	S12E3PP45	€ 10,98
Bar 35 cm 14" - 52 drive links	S14E3PP52	€ 12,37
Bar 35 cm 14" - 50 drive links	S14E3PT50	€ 12,37
Bar 40 cm 16" - 57 drive links	S16E3PP57	€ 13,68
Bar 40 cm 16" - 55 drive links	S16E3PT55	€ 13,68
Bar cm 38 15" - 64 drive links	S15G3SU64	€ 19,01
Bar cm 45 18" - 72 drive links	S16G3SE66	€ 20,00
Bar cm 45 18" - 72 drive links	S18G3SU72	€ 21,14
Bar cm 38 15" - 64 drive links	S15G5SU64	€ 19,01
Bar cm 40 16" - 66 drive links	S16G5SU66	€ 20,00
Bar cm 40 16" - 66 drive links	S16G5SE66	€ 19,00
Bar cm 45 18" - 72 drive links	S18G5SE72	€ 21,14
Bar cm 45 18" - 72 drive links	S18G5SU72	€ 21,14
Bar cm 40 16" - 66 drive links	S16G6SS67	€ 19,01
Bar cm 45 18" - 74 drive links	S18G6SS74	€ 21,14
Bar cm 38 15" - 56 drive links	S15D5SH56	€ 11,06
Bar cm 40 16" - 60 drive links	S16D5SH60	€ 11,31
Bar cm 43 17" - 64 drive links	S17D5SH64	€ 22,21
Bar cm 45 18" - 68 drive links	S18D5SH68	€ 22,86
Bar cm 50 20" - 72 drive links	S20D5SH72	€ 24,59
Bar cm 40 16" - 60 drive links	S16D6SS60	€ 11,31
Bar cm 45 18" - 66 drive links	S18D6SS66	€ 22,86
Bar cm 50 20" - 72 drive links	S20D6SS72	€ 24,59



SARP

ROUND FILES

Round file 4,8 mm (3/16")	L 3	€ 22,95
Round file 4 mm (5/32")	L 5	€ 22,95
Round file 5,5 mm (7/32")	L 7	€ 22,95
Round file 3,3 mm (1/8")	L 18	€ 22,95

Lawn mower accessories



BLADES

Mulching blade for mod. Taurus 51T and World WYZ20-BS60-B	COD. 2000002B	€ 15,66
Mulching blade for mod. Taurus 56TW and World WYZ22-BS60-B	COD. 2200039B	€ 18,85
Blade for Taurus/World lawn mower cutting width 41 cm	COD. 1600119	€ 13,44
Blade for Taurus/World lawn mower cutting width 46 cm	COD. XSS46-01	€ 14,20
Blade for Taurus/World lawn mower cutting width 51 cm	COD. 2000002	€ 12,83
Blade for Taurus/World lawn mower 53T	COD. 2100005	€ 15,25
Blade for Taurus/World lawn mower 53TW	COD. 2100709	€ 15,25
Blade for Taurus/World lawn mower cutting width 56 cm	COD. 2200039	€ 16,39

Fabbrica motori dal 1978

Blue Bird
Industries 

Blue Bird Industries

Fabbrica Motori s.r.l.

Via Due Camini, 19
36010 Zanè (VI) Italy
T +39 0445 314138
F +39 0445 314225
www.bluebirdind.com
info@bluebirdind.com

Copyright © 2021 Blue Bird Industries Fabbrica Motori Srl

All rights reserved by law and by European and international conventions.

No part of this catalog may be reproduced with electronic, mechanical or other systems, without the written authorization of Blue Bird.

Blue Bird and other product and feature brands are trademarks registered by Blue Bird or their respective manufacturers.

Blue Bird Industries Fabbrica Motori Srl reserves the right to change data, characteristics and images at any time and without prior notice in order to improve the product in terms of quality and reliability.

The photos may differ in detail from the versions of the products marketed.

Blue Bird Industries assumes no responsibility for any inaccuracy or incompleteness of the information provided and / or for printing errors.

Always attentive and oriented towards continuous research, Blue Bird has studied a range of products that can satisfy every user and adapt to the most varied needs and working conditions.

The entire line was developed with the help of those who use these machines in the woods, parks and gardens; for this reason, particular attention has been paid to safety, ergonomics and quality, reducing vibrations and noise.

All reported prices are retail prices without VAT

Graphic study and printing:
Grafiche Marcolin Schio

